



West Virginia DEPARTMENT OF
EDUCATION

West Virginia General
Summative Assessments
Grades 3-8

2021-2022

Published January 18, 2022



**West Virginia Board of Education
2021-2022**

Miller L. Hall, President
Thomas W. Campbell, CPA, Vice President
F. Scott Rotruck, Financial Officer
Robert W. Dunlevy, Member
L. Paul Hardesty, Member
Daniel D. Snavelly, M.D., Member
Debra K. Sullivan, Member
Nancy J. White, Member
James S. Wilson, D.D.S., Member

Sarah Armstrong Tucker, Ph.D., Ex Officio
Chancellor
West Virginia Higher Education Policy Commission
West Virginia Council for Community and Technical College Education

W. Clayton Burch, Ex Officio
State Superintendent of Schools
West Virginia Department of Education

Remember:

**Schools must follow
state and local health department guidance
during test administration.**

Table of Contents

1.0 About the West Virginia General Summative Assessment Grades 3-8.....	8
What is the West Virginia General Summative Assessment?	8
About this Manual.....	8
2.0 Overview of the Summative Assessments	9
2.1 About the ELA and Mathematics Tests	9
2.2 About the Science Test	9
2.3 Test Administration Roles and Responsibilities.....	9
2.4 Training	10
3.0 Test Administration Resources	11
3.1 General Summative Assessment Administration Resources	11
4.0 Ensuring Test Security	14
4.1 Security of the Test Environment	14
4.2 Secure Handling of Printed Materials	15
Print-on-Demand.....	15
Storage and destruction of printed materials and scratch paper	16
5.0 Responding to Testing Irregularities	17
5.1 Impact and Definitions.....	17
5.2 Reporting Timelines and Activities.....	17
5.3 Test Security Required Action Steps.....	17
Irregularity	17
Breach.....	18
5.4 Test Security Incident Log.....	18
6.0 Appeals.....	20
6.1 Online System Appeals Types	20
7.0 Technology Infrastructure	22
7.1 Technology Resources.....	22
7.2 The Secure Browser	22
8.0 General Test Administration Information	23
8.1 Assessment Participation.....	23
Participation of Students with Disabilities and/or English Learners	23
8.2 General Rules of Online Testing	24
Basic Online Testing Parameters.....	24
Pause Rules.....	24
Test Timeout.....	25
8.3 Testing Time and Recommended Order of Administration	26
Scheduling Time for Testing:.....	26

Recommended Order of Online Administration for the ELA Tests.....	27
8.4 Sensitive Responses	27
Taking Appropriate Action with Student Responses or Student Actions that Cause Concern	27
Collecting Information.....	28
Escalating Information	28
9.0 Accommodations.....	29
10.0 Prior to Test Administration.....	31
10.1 Establishing Appropriate Testing Conditions	31
10.2 Tasks to Complete Prior to Test Administration.....	32
11.0 Day of Test Administration – Online Test.....	34
11.1 Administering the West Virginia General Summative Assessment - SCRIPTS.....	35
Generic Script for ELA (except Writing), Mathematics, and Science Tests - (TA must follow directions for specific tests.)	35
Generic Script for Writing Tests.....	42
12.0 Following Test Administration	50
12.1 Destroying Test Materials	50
12.2 Reporting Testing Irregularities and Breaches	50
13.0 Day of Test Administration – Pencil-Paper Test	51
13.1 Preparing for Paper-Pencil Testing.....	51
13.2 Paper Administration Precautions.....	52
13.3 Administering the West Virginia General Summative Assessment - SCRIPTS.....	52
Script for English Language Arts – Reading Test.....	53
Script for English Language Arts – Writing Test.....	57
Script for Mathematics Test.....	60
Script for Science Test.....	66
13.4 Using the Data Entry Interface for Accommodated Special Paper Version Tests	70
Appendix A: Frequently Used Terms	71
Appendix B: Item Types	74
Item and Response Types.....	74
Summary of Item Types and How to Provide Responses	74
Technical Skills to Access Embedded Resources	75
Appendix C: Secure Browser for Testing.....	76
Secure Browser Error Messages.....	76
Force-quit Commands for Secure Browsers	76
Appendix D: Practice Tests.....	78
Overview of the Practice Tests	78

Appendix E: Computer Test Pause Rule Scenarios.....	79
Appendix F: Test Security Chart	80
Appendix G: Multiplication Table and 100s Table	82

List of Tables

Table 1: User Roles and Responsibilities.....	9
Table 2: Manuals and User Guides.....	11
Table 3: Training Modules and Tutorials.....	12
Table 4: Other Resources.....	12
Table 5: Requirements of the Test Environment.....	14
Table 6: Definitions for Test Security Incidents.....	17
Table 7: Online System Appeals Types	20
Table 8: Suggested Time Allotments for West Virginia General Summative Assessment.....	26
Table 9: Definitions for Universal Tools and Accommodations	30
Table 10: Additional Required Resources.....	31

WV GENERAL SUMMATIVE ASSESSMENTS CUSTOMER SERVICE

The [West Virginia Portal](https://wv.portal.cambiumast.com) at <https://wv.portal.cambiumast.com>, is the home for all online assessment administration information.

For questions regarding testing technical issues, please contact the West Virginia General Summative Assessment Help Desk at 1-844-560-7367 or WVHelpDesk@cambiumassessment.com.

The West Virginia General Summative Assessment Help Desk is open Monday–Friday from 6:00 a.m. to 6:00 p.m. Eastern Time

The Help Desk may be contacted for situations and questions such as the following:

1. Testing platform down or unavailable, and
2. Password resets for district and school users.

When contacting the Help Desk, provide the representative with as much detail as possible about the issue(s) encountered and the system on which it occurred. This should include the following:

- Type of device being used for the test;
- Any error messages appearing (code and description);
- Operating system and browser information;
- Network configuration information;
- Your contact information for follow-up, including email address and phone number; and
- Statewide student identifier (SSID), this will be either their WVEIS number or Assessment ID number assigned by the WVDE; grade level; content area; and session ID.

For questions regarding test administration or policy issues, please contact your district test coordinator.

Contact your district test coordinator for situations and questions such as the following:

1. Testing platform down or unavailable; user accounts not available or users not able to administer tests;
2. Student information incorrect or missing;
3. Preparing for online testing—downloading the secure browser, voice packs, etc.;
4. Tests not showing as available to students when they log in to begin testing; and
5. Settings not presenting as intended.

1.0 About the West Virginia General Summative Assessment Grades 3-8

What is the West Virginia General Summative Assessment?

The West Virginia General Summative Assessment (WVGSA) includes individual content assessments in the areas of English language arts (ELA) and mathematics in Grade 3-8 and science in Grades 5 and 8. These assessments measure a student's levels of performance on clearly defined standards, objectives, and skills. The assessment results provide information about a student's academic strengths, as well as areas needing improvement. The parent/guardian will receive a student report indicating levels of performance in each of the content areas. Results of the tests will be used by educators to improve student learning and performance.

About this Manual

This manual will discuss policy and procedure for the West Virginia General Summative Assessment for ELA, mathematics, and science.

Anywhere this manual mentions test administrators (TA), it is referring to both TAs and teachers (TE). In addition to having the privileges of a TA, a TE has access to the Interim and Diagnostic Teacher Item Previewer, and the Reporting System.

Anywhere this manual references SSID, it is referring to the student's WVEIS number or Assessment ID number assigned by the WVDE.

This manual includes information pertaining to both the online assessments and the paper-pencil assessments.

2.0 Overview of the Summative Assessments

2.1 About the ELA and Mathematics Tests

The West Virginia General Summative Assessment in ELA and mathematics will be given to students in Grades 3–8. Each content area will be assessed using an adaptive online test.

2.2 About the Science Test

The West Virginia General Summative Assessment in science will be given to students in Grades 5 and 8. The online test is a grade-band test assessing students using a matrix design.

2.3 Test Administration Roles and Responsibilities

The West Virginia General Summative Assessment uses a role-based system. Each user is assigned a specific role which has access to the different systems or features. All test administration and results reviewed/obtained are covered by West Virginia Board of Education (WVBE) Policy 2340. Users' roles and responsibilities for the tests are provided in Table 1.

Table 1: UserRoles and Responsibilities

User Role	Description
District Test Coordinator (DC)	<p>DCs are responsible for the following:</p> <ul style="list-style-type: none"> • Completing training as defined by WVBE Policy 2340; • Adding/removing school users in/from of TIDE; • Creating or approving testing schedules and procedures for the schools in the district (consistent with WVDE procedures); • Working with technology staff to ensure necessary secure browsers are installed and any other technical issues are resolved; • Monitoring testing progress during the testing window and ensuring all students participate, as appropriate; • Addressing testing problems, as needed; • Ensuring the school test coordinators (SC) and test administrators (TA) in their districts are appropriately trained regarding the test administration and security policies and procedures; • Reporting test security incidents to the WVDE; • Creating appeals in TIDE; and • Providing general oversight for all administration activities in their district schools.

User Role	Description
School Test Coordinator (SC)	<p>SCs are responsible for:</p> <ul style="list-style-type: none"> • Completing training as defined by WVBE Policy 2340; • Adding/removing TAs to/from TIDE; • Identifying TAs and ensuring they are properly trained; • Entering, verifying, and/or correcting test settings for students; • Creating testing schedules and procedures for the school (consistent with WVDE and district procedures and policies); • Working with technology staff to ensure necessary secure browsers are installed and any other technical issues are resolved; • Monitoring testing progress during the testing window and ensuring all students participate, as appropriate; • Addressing testing problems, as needed; • Mitigating and reporting all test security incidents to their DC in a manner consistent with WVDE procedures and policies; and • Providing general oversight for all administration activities in their school and for all TAs.
Test Administrator (TA)	<p>TAs are responsible for:</p> <ul style="list-style-type: none"> • Completing training as defined by WVBE Policy 2340; • Viewing student information prior to testing to ensure the correct student receives the proper test with the appropriate accommodations (TAs should report any potential data errors to SCs as appropriate.); • Administering the West Virginia General Summative Assessment; and • Reporting all potential test security incidents to their SC in a manner consistent with WVDE procedures and policies.

2.4 Training

Prior to administering a test, test administrators (and any other individuals who will be administering any secure assessment) should be trained on WVBE Policy 2340, the *Guidelines for Participation in West Virginia State Assessments*, this manual, and the *TA User Guide* and should view the associated training modules. Additionally, DCs, SCs, and TAs should complete the test administrator certification course. All these resources are available on the [West Virginia Portal](#).

Prior to viewing assessment results, an individual should be trained on WVBE Policy 2340.

3.0 Test Administration Resources

This *Test Administration Manual (TAM)* for the West Virginia General Summative Assessment is intended for staff who play a role in the administration of assessments. This manual provides procedural and policy guidance to implement the assessments. The appendices of this manual contain important information which can be used as stand-alone materials and are easily extracted for printing or distribution. For a list of frequently used terms associated with the assessments, see *Appendix A*. For specific questions not addressed in this manual, please contact your district test coordinator.

3.1 General Summative Assessment Administration Resources

This manual is designed to complement a variety of other resources listed in Table 2 (manuals),

Table 3: Training Modules and Tutorials

(training modules and PowerPoints), and Table 3 (other resources). All resources can be found on the West Virginia Portal at <https://wv.portal.cambiumast.com/>. All manuals and user guides are located under Resources in the Test Administrator - or Test Coordinator - Manuals and User Guides folder.

Table 2: Manuals and User Guides

Resource	Description
<i>Data Entry Interface User Guide (DEI)</i>	The <i>Data Entry Interface (DEI) User Guide</i> provides instructions for entering student responses into the DEI. ALL student responses to questions on the paper-pencil tests MUST be entered into the DEI by a scribe.
<i>Test Information Distribution Engine (TIDE) User Guide</i>	TIDE is the system used to manage student information and user accounts for online testing as well as appeals and roster management. The TIDE User Guide provides a step-by-step approach to using the system.
<i>Assistive Technology Manual</i>	The <i>Assistive Technology Manual</i> includes information about supported operating systems and required hardware and software for braille testing.
<i>Operating System-Specific Configuration, Troubleshooting, and advanced Secure Browser Installation Guide</i>	The <i>Operating System-Specific Configuration, Troubleshooting, and advanced Secure Browser Installation Guide</i> provides instructions for installing the secure browser on supported operating systems and is organized by operating system.
<i>Setting up Your Online Testing Technology Quick Guide</i>	The <i>Setting up Your Online Testing Technology Quick Guide</i> provides technology staff with the technical specifications for online testing, including information on the Internet and network requirements, general hardware and software requirements, secure browser installation, and the text-to-speech function.
<i>Test Delivery System TA User Guide (TDS)</i>	The <i>Test Delivery System User Guide</i> supports individuals using the test delivery system applications to manage testing for students. This resource provides information about the test delivery system, including the test administrator and student applications.

Resource	Description
<i>Teacher Item Previewer Product Guide</i>	The <i>Teacher Item Previewer Product Guide</i> helps users navigate the interim and diagnostic assessments.
<i>Reporting Quick Guides</i>	The <i>Reporting Quick Guides</i> are designed to help users easily navigate the Reporting System for applicable tests.

Table3: Training Modules and Tutorials

All Modules and Tutorials are located in the Test Administrators – Training Modules and Tutorials Folder located on the [West Virginia Portal](#).

Module Name	Primary Audience	Objective
Student Interface	Students, District/School Test Coordinators, Test Administrators, Teachers	This PowerPoint explains how to navigate the Student Interface. This PowerPoint includes how students log in to the testing system and select a test, the layout of the test and the functionality of the test tools, and how students navigate through the test.
Test Administrator (TA) Interface	District/School Test Coordinators, Test Administrators, Teachers	This PowerPoint presents an overview on how to navigate the Test Administrator Interface in the Test Delivery System (TDS).
Test Information Distribution Engine (TIDE)	District/School Test Coordinators, Test Administrators	This PowerPoint provides detailed information on how to register users, enroll students, manage and edit users/students, and process/view test invalidations.
Reporting	District/School Test Coordinators, Test Administrators, Teachers	This PowerPoint presents how to access student scores and reporting.
Teacher Item Previewer	District/School Test Coordinators, Test Administrators, Teachers	This PowerPoint presents how to navigate the Teacher Item Previewer, which allows users to view the interim assessments for administrative and instructional purposes.

Table3: Other Resources

Resource	Description
ELA and Mathematics Practice Tests	Practice Tests are available for Grades 3–8. The Practice Tests provide a preview of the item types students will encounter. Item types are listed and described in <i>Appendix B: Item Types</i> . This is the link to the student Practice Tests page on the West Virginia Portal: https://wv.portal.cambiumast.com/families.html See also <i>Appendix D: Practice Tests</i> for additional information about the Practice Tests.



Science Practice Test	Practice Test includes items for Grades 5 and 8. The Practice Test provides a preview of the item types students will encounter. This is the link to the student Practice Tests page on the West Virginia Portal: https://wv.portal.cambiumast.com/training-tests.stml See also <i>Appendix D: Practice Tests</i> for additional information about the Practice Tests.
Reporting Tutorials	These provide users with tutorials for accessing and utilizing the Reporting system for interim assessments. This is the link to the tutorials: https://wv.portal.cambiumast.com/resources/test-administrators/reporting-module

* Students or parents may use the Practice Tests by logging in as a “guest” without login credentials.

4.0 Ensuring Test Security

The security of assessment instruments and the confidentiality of student information are vital to maintaining the validity, reliability, and fairness of the results.

All summative test items and test materials are secure and must be appropriately handled. Secure handling protects the integrity, validity, and confidentiality of assessment items, prompts, and student information. Any deviation in test administration must be reported as a test security incident to ensure the validity of the assessment results.

4.1 Security of the Test Environment

Table 4 describes security requirements for the test environment during various stages of testing. The test environment refers to all aspects of the testing situation while students are testing and includes what a student can see, hear, or access (including access via technology).

Table 4: Requirements of the Test Environment

Requirement	Description
BEFORE TESTING	
Instructional materials removed or covered	Instructional materials must be removed or covered, including, but not limited to, information displayed on bulletin boards, chalkboards, dry-erase boards, white-boards or on charts which may assist students in answering.
Student seating	Students must be seated so there is enough space between them to minimize opportunities to look at each other's work, or they should be provided with table-top partitions.
Signage	Place a "DO NOT ENTER – TESTING IN PROGRESS" sign on the door or post signs in halls and entrances rerouting hallway traffic to promote optimum testing conditions.
DURING TESTING	
Quiet environment	Provide a quiet environment void of talking or other distractions that may interfere with a student's ability to concentrate or might compromise the testing situation.
Monitoring	Students are actively supervised.
Electronic devices	Test administrators (TAs) and students are prohibited from access to unauthorized electronic devices allowing availability to outside information, communication with others, or photographing or copying test content. This includes any device with cellular, messaging, or wireless capabilities, but is not limited to cell phones, iPods, mp3 players, cameras, and electronic translation devices.
Access to allowable resources only	Students must only have access to and use of those allowable resources identified by the WVDE (see section <i>10.1 Establishing Appropriate Testing Conditions</i> for examples) as permitted for each specific test (or portion of a test).
Access to assessments	Only students who are testing can view items. Unauthorized individuals must not be in the room where a test is being administered.

Requirement	Description
Testing through a secure browser	Administration of the West Virginia General Summative Assessment is permitted only through the WV Secure Browser. This is accessed through the WV Secure Browser icon on the computer desktop, or the SecureTestBrowser app on an iPad
DURING AND AFTER TESTING	
No access to responses	District test coordinators (DCs), school test coordinators (SCs), test administrators (TAs), and other individuals are not permitted to review student responses on the testing platform or students' notes on scratch paper.
No copies of test materials	Unless needed as a print-on-demand or braille accommodation, no copies of the test items, stimuli, reading passages, or writing prompts may be made or otherwise retained.
No access to digital, electronic, or manual devices	No digital, electronic, or manual device may be used to record or retain test items, reading passages, or writing prompts. Similarly, these materials must not be discussed with or released to anyone via any media, including fax, email, social media, websites, apps, etc.
No retaining, discussing, or releasing test materials	Descriptions of test items, stimuli, printed reading passages, or writing prompts must not be retained, discussed, or released to anyone.
No reviewing, discussing, or analyzing test materials	DCs, SCs, TAs, and other staff may not review, discuss, or analyze test items, stimuli, reading passages, or writing prompts at any time, including before, during, or after testing.
All test materials must remain secure at all times	Printed materials from the print-on-demand accommodation, scratch paper, documents with student information, and large print and braille test booklets must be kept in a securely locked room or locked cabinet that can be opened only with a key or keycard by staff responsible for test administration.
AFTER TESTING	
No test materials used for instruction	Test items, stimuli, reading passages, or writing prompts must not be used for instruction.
Destroy test materials securely	Printed test items/passages, including embossed braille printouts, and scratch paper must be collected and inventoried at the end of each test session and then immediately shredded.

TAs and SCs or other individuals who witness, are informed of, or suspect the possibility of a test security incident violating WVBE Policy 2340 and potentially affecting the integrity of the assessments or the data should follow the steps outlined in section *5.0 Responding to Testing Irregularities and Breaches* and section *6.0 Appeals* (as necessary) of this manual and the *TIDE User Guide* located on the

4.2 Secure Handling of Printed Materials

Print-on-Demand

When testing a student with the Print-on-Demand accommodation, the TA must ensure the printer is on and is monitored by staff who have been trained on WVBE Policy 2340. When a student sends a print request to the TA by clicking on the print icon, the TA must approve the request. This request needs to be made for each individual item.



IMPORTANT: Print-on-Demand cannot be used to create a printed test booklet.

Storage and destruction of printed materials and scratch paper

Large print and braille test booklets, printed materials from the Print-on-Demand accommodation, tactile graphics, and scratch paper must be kept in a securely locked room or locked cabinet that can be opened only with a key or keycard by staff responsible for test administration who have signed a security agreement. All test materials must remain secure at all times.

Printed test items/passages, including embossed braille printouts and scratch paper, must be collected and inventoried at the end of each test and then immediately shredded according to WVBE Policy 2340. DO NOT keep printed test items/passages or scratch paper for future test sessions.

5.0 Responding to Testing Irregularities

Test security incidents are behaviors prohibited either because they give a student an unfair advantage or because they compromise the secure administration of the assessments. Whether intentional or by accident, failure to comply with security rules, either by staff or students, constitutes a test security incident. Irregularities need to be reported in accordance with the instructions in this section for each severity level.

5.1 Impact and Definitions

Definitions for test security incidents are provided in Table 5. Additionally, *Appendix F: TEST SECURITY CHART* shows the test security incident levels and examples of types of issues.

Table 5: Definitions for Test Security Incidents

Type	Definition
Irregularity	An unusual circumstance affecting the individual or group of students who are testing and potentially having an impact on student performance on the test, test security, or test validity. These circumstances can be corrected and contained at the local level and submitted in the online appeals system for resolution if required. An irregularity must be reported to the school test coordinator, who should report it to the district test coordinator, who will enter it into the appeals module of TIDE if required.
Breach	An incident posing a threat to the validity of the test. Examples may include such situations as a release of secure materials or a security/system risk. A breach incident must be immediately reported to the school test coordinator who will report it to the district test coordinator. The district test coordinator will report the incident to the WVDE and enter it into the appeals module of TIDE if required.

It is important for test administrators (TAs) to ensure the physical conditions in the testing room meet the criteria for a secure test environment. See section *4.1 Security of the Test Environment* for more detail.

5.2 Reporting Timelines and Activities

Irregularities must be documented in the Test Security Incident Log, and the TA must inform the SC. The SC should notify the DC, and the DC, if needed, will enter the incident in the appeals module of TIDE.

A Breach requires immediate notification by telephone to the WVDE by the DC, followed by documentation in the Test Security Incident Log and in the appeals module of TIDE (if appropriate).

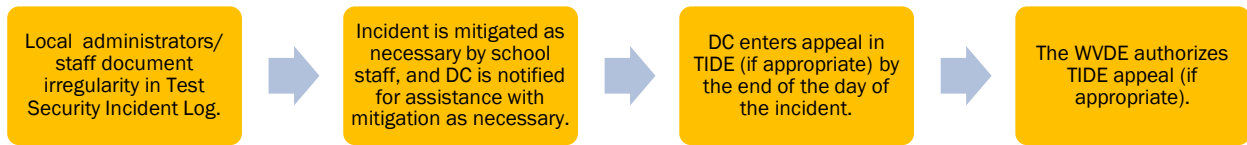
5.3 Test Security Required Action Steps

The Test Security Required Action Steps depict the required actions for each test security incident in a process flow diagram format.

Irregularity

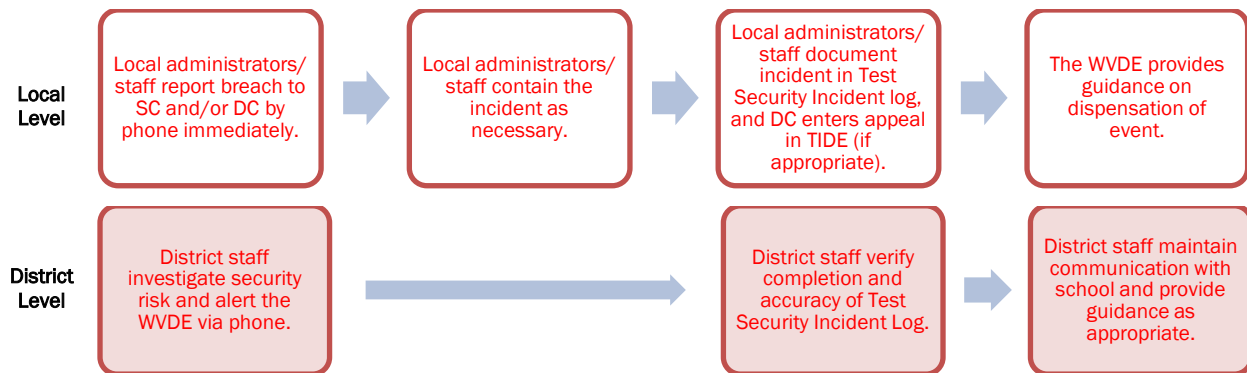
An unusual circumstance impacting the individual or group of students who are testing and potentially affecting student performance on the test, test security, or test validity. These circumstances can be contained at the local level. (Example: Disruption during the test session such as

a fire drill.) Should a student require a Reset, Reopen, or Invalidation, the DC enters the appeal in TIDE.



Breach

A test administration event posing a threat to the validity of the test. Breaches require immediate attention and escalation to the WVDE. Examples may include such situations as exposure of secure materials or a repeatable security/system risk. (Example: Administrators modifying student answers, or test items shared in social media.) Should a student require a Reset, Reopen, or Invalidation, the DC enters the appeal in TIDE.



5.4 Test Security Incident Log

The Test Security Incident Log is the document of record for all test security incidents and should be maintained at the district level. More serious incidents will be reported either immediately (breach) or at the end of the day (irregularity).

Documentation of Security Incidents: Use of Test Security Incident Log and Appeals System

School and district test coordinators should ensure all test security incidents are documented in the Test Security Incident Log. The Test Security Incident Log is located in the Assessment Forms folder under “Files” in the General channel on the District Test Coordinators Teams page. Contact your district test coordinator to obtain a copy.

TAs must use the Test Security Incident Log (available in their test packet) to log incidents immediately upon identification that one has occurred and submit the log via email or alternate agreed-upon process to their SCs and DCs. District staff should establish a process that includes how frequently these logs should be submitted and communicate this preference to schools. In addition to logging all test security incidents in the Test Security Incident Log, incidents requiring specific actions (appeal requests) to be taken regarding

the test itself are to be reported to the WVDE as per WVBE Policy 2340 and entered in TIDE following the procedures noted in section *5.3 Test Security Required Action Steps*.

6.0 Appeals

For security incidents resulting in a need to reset or invalidate individual student assessments, the request must be approved by the WVDE. In most instances, an appeal will be submitted to address a test security breach or irregularity. *In some cases, an appeal may be submitted to address incidents that are not security related.*

Because the Appeals system is for action only, all appeals should also be entered on the Test Security Incident Log. The log is located in the Assessment Forms folder under “Files” in the General channel on the District Test Coordinators Teams page. Contact your district test coordinator to obtain a copy.

6.1 Online System Appeals Types

The online Appeals process is described in Table 7. The *TIDE User Guide*, located on the West Virginia Portal at <https://wv.portal.cambiumast.com/>, contains specific instructions on submitting appeal requests.

Table 6: Online System Appeals Types

Type of Appeal	Description	Conditions for Use
RESET	Resetting a student’s test removes student access to the test and enables the student to start a new test.	<p>The WVDE may reset any test if any of the following settings need to be changed because they were incorrectly set:</p> <ul style="list-style-type: none"> • American Sign Language (for mathematics and ELA listening); • Braille (braille is a language setting); • Closed captioning (for ELA listening stimuli); • Streamlined interface (the streamlined interface is a test shell setting); • Translation—stacked (for mathematics tests only); <i>Note: Stacked translations are automatically provided when the selected language is Spanish.</i> • Text-to-speech (e.g., for ELA reading passages); and/or • Any non-embedded accommodation(s) <p><i>Note: All documentation must be received by the WVDE prior to approving a request to Reset a test.</i></p> <p>The WVDE will review individually other request submitting for resetting.</p>
INVALIDATE	Invalidating a student’s test eliminates the test. The test will not be scored, and the student will not have the opportunity to retest.	<p>The WVDE may invalidate any test if:</p> <ul style="list-style-type: none"> • There is a test security breach. • The test is administered in a manner inconsistent with the <i>Test Administration Manual (TAM)</i>. <p><i>Note: Invalidated tests will not be scored, and students will NOT have the opportunity to retest.</i></p>

Type of Appeal	Description	Conditions for Use
RE-OPEN TEST SEGMENT	Reopens a previous test segment. Students can modify responses to answered items in the reopened segment.	The WVDE may reopen a test segment so students can review/answer items in a test segment. This appeal will only be granted under extreme circumstances. The DC must call the WVDE.
RESTORE	Reverses a reset, restoring the student's responses on the test prior to when the reset was processed.	The WVDE may restore a test that was inadvertently reset.
GRACE PERIOD EXTENSION (GPE)	Allows the student to review previously answered questions upon resuming a test or test segment after expiration of the pause timer.	<p>This type of appeal is only available for pauses of longer than 20 minutes due to extraordinary circumstances, and approval by the WVDE is required prior to requesting a GPE.</p> <p>NOTE: Grace Period Extensions can only be requested for tests in Paused status. GPEs are not available for submitted tests.</p> <p>The following scenarios are possible:</p> <ul style="list-style-type: none"> • Resuming test within 20 minutes, the student can review previously answered questions; • Resuming test after a pause greater than 20 minutes without a GPE, the student cannot review previously answered questions – the student can only work on unanswered questions; and • Resuming test after a pause greater than 20 minutes with a GPE, the student can review previously answered questions within the same test segment. Normal pause rules are applicable once the student resumes the test.

7.0 Technology Infrastructure

Prior to assessment administration, district test coordinators (DCs), school test coordinators (SCs), technology coordinators, and test administrators (TAs) should review the technology infrastructure at their schools to ensure it meets the minimum requirements for administering the West Virginia General Summative Assessment.

7.1 Technology Resources

The *Setting Up Your Online Testing Technology Quick Guide* and the *Configuration, Troubleshooting, and Advanced Secure Browser Installation Guides* are located on and available for download from the [West Virginia Portal](#). The *Setting Up Your Online Testing Technology* provides technology coordinators with the technical specifications for online testing, including information about Internet and network requirements, hardware and software requirements, secure browser installation, and text-to-speech functionality.

7.2 The Secure Browser

The secure browser is designed to support test security by prohibiting access to external applications or navigation away from the assessment. Devices used for testing must be equipped with a secure browser prior to the assessment.

SCs, in conjunction with district/school technology personnel, are responsible for ensuring each device to be used for testing at the school is properly secured by installing the most current and correct secure browser.

See the *Setting Up Your Online Testing Technology Quick Guide* on the [West Virginia Portal](#) for more information on secure browser installation.

See the *Operating System-Specific Configuration, Troubleshooting, and Advanced Secure Browser Installation Guides* on the [West Virginia Portal](#) for additional technology information. There are several operating system-specific guides on the [West Virginia Portal](#). Technology Coordinators should use whichever guide is most appropriate for their district or school technology.

See *Appendix C: Secure Browser for Testing* for additional guidelines about using the secure browser.

8.0 General Test Administration Information

This section provides an overview of the online testing environment and guidelines for test administration. Use this section to become familiar with what students will experience in accessing the assessments, to prepare for the assessments, and to review general rules for online testing. Information about the Practice Tests, test pauses, and test resumptions is also included in this section. Test administrators (TAs) should become familiar with this section well in advance of the start of testing so materials for login, accommodations, and exemptions described below can be assembled.

8.1 Assessment Participation

Participation of Students with Disabilities and/or English Learners

Consistent with the WVBE Policy 2340, all students, including students with disabilities, English Learners (ELs), and ELs with disabilities, should have equal opportunity to participate in the West Virginia General Summative Assessment. West Virginia has crafted a comprehensive accessibility and accommodations framework, the *Guidelines for Participation in West Virginia State Assessments*, for all students, including those with special assessment needs. The West Virginia General Summative Assessment also contains a variety of innovative digital accessibility tools as well as a variety of accommodations. The *Guidelines for Participation in West Virginia State Assessments* can be found on the [West Virginia Portal](#) (Test Administrator Resources).

All public school students (including virtual school students) enrolled in Grades 3–8 are required to participate in the West Virginia General Summative Assessment in English language arts and mathematics except:

- Students with the most significant cognitive disabilities who meet the criteria for a state-selected or state-developed English language arts and mathematics alternate assessments based on alternate achievement standards (approximately one percent or fewer of the student population).

All public school students enrolled in Grades 5 and 8 are required to participate in the West Virginia General Summative Assessment in science except:

- Students with the most significant cognitive disabilities who meet the criteria for a state-selected or state-developed science alternate assessment based on alternate achievement standards (approximately one percent or fewer of the student population).

School personnel should follow federal and state policies regarding student participation.

8.2 General Rules of Online Testing

This section provides a brief overview of the general test administration rules for different portions of the assessment as well as information about test tools and accommodations. For more information, refer to the *Test Delivery System User Guide* located on the [West Virginia Portal](#)

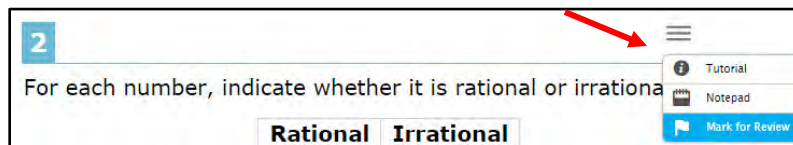
Basic Online Testing Parameters

- Students must be physically present for test administration; remote administration is not permitted for the West Virginia General Summative Assessment.
- Students may not return to any test once it has been completed and submitted.
- Within some tests there are segments. Once a student has had the opportunity to review a segment and proceeds to the next segment, he or she may not return to the previous segment.

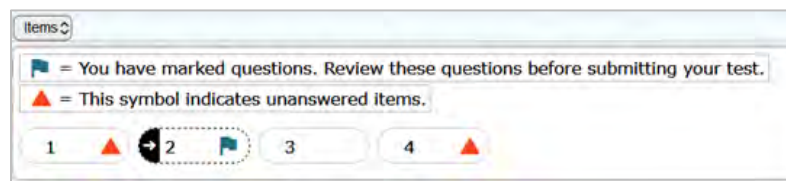


Within the Grade 6 Mathematics Test there are two segments. The “Calculator-allowed Segment” and the “No-calculator Segment.” Once a student has had the opportunity to review items in the first segment and proceeds to the next segment, he or she may not return to that previous segment.

- Students must enter an answer for all items on a page before they can access the next page. Some pages contain multiple items. Students may need to use the vertical scroll bar to view all items on a page.
- Students may mark items for review using the context menu in the upper right portion of the question.



- To access items marked for review, use the Items drop-down list from the upper left corner of the screen to return to items within the current segment.



Pause Rules

During the ELA, mathematics, and science tests:

- If a test is paused for more than 20 minutes, the student is:
 - Required to log back in to the test;

- Presented with the page containing the item(s) the student was working on when the assessment was paused (if the page contains at least one unanswered item) OR with the next page (if all items on the previous page were answered); and
- NOT permitted to review or change any previously answered items, even if they are marked for review (except for items on a page containing at least one item not yet answered).
- Any highlighted text and notes on the *digital notepad* will NOT be saved when a test is paused regardless of how long the test is paused.
- In the event of a technical issue (e.g., power outage or network failure), students will be logged out and the test will automatically be paused. The students will need to log in again upon resuming the test. When a technical issue results in a pause greater than 20 minutes, SCs must document the technical issue on the Test Security Incident Log. The SC will then contact the district test coordinator concerning this event. The DC may contact the WVDE for technical issues meriting a grace period extension.



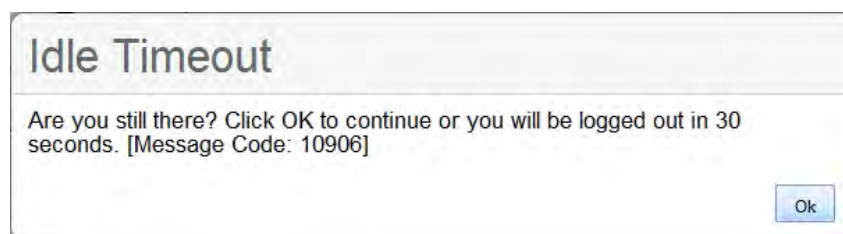
Important: If a test is paused, the test will resume on the first unanswered item. If a student has gone back to a previous page to review an item, has removed the answer to that item, and the test is then paused for more than 20 minutes, when the student resumes testing, he or she will begin on the item under review. After the student answers the item being reviewed he or she will be directed to the next unanswered item.

See *Appendix E: Pause Rules Scenarios* to review the rules which govern pausing during the test.

Test Timeout

As a security measure, students are automatically logged out of the test after 20 minutes of inactivity. *Activity* is defined as selecting an answer or navigation option in the assessment (e.g., clicking [Next] or [Back] or using the Questions drop-down list to navigate to another item). Moving the mouse or clicking on an empty space on the screen is not considered activity.

Before the system logs the student out of the assessment, a warning message will be displayed on the screen. If the student does not click [OK] within thirty seconds after this message appears, he or she will be logged out. Clicking [OK] will restart the 20-minute inactivity timer.



Caution: As a security measure, TAs are automatically logged out after 20 minutes of user and student inactivity in the session, which will result in the closing of the test session.

8.3 Testing Time and Recommended Order of Administration

All students participating in the assessments will receive English language arts (ELA), writing, and mathematics tests. The ELA and math tests are computer adaptive. The writing test consists of a writing task. All Grade 5 and 8 students participating in the science assessment will receive a matrix designed test. In a matrix designed test, all standards are covered within the test group of students. Each student within that group is administered a test covering a portion of the standards.

Scheduling Time for Testing:

Table 7 contains suggested time allotments to be used when scheduling sessions for the West Virginia General Summative Assessment. This information is for scheduling purposes only, as the assessments are not timed.

Table 7: Suggested Time Allotments for West Virginia General Summative Assessment

Assessment	Grades	Total hrs : mins
ELA - Reading	3-8	2:00 (breaks-as-needed)
ELA - Writing	3-8	2:00 (breaks-as-needed) Note: The ELA - Writing Test must be completed in one session. (The only exception is students who are sequestered during a lunch break.)
Mathematics	3-8	2:00 (breaks-as-needed)
Science	5, 8	2:00 (breaks-as-needed)

These estimates do not account for any time needed to start computers and log in students. TAs should work with SCs to determine precise testing schedules.

Important reminders:

1. The tests are not timed; all time estimates are approximate.
2. Students should be allowed extra time if they need it, but test administrators need to use their best professional judgment when allowing students extra time. Students should be actively engaged in responding productively to test questions.
3. The ELA – Writing test must be completed in one session. (The only exception is students who are sequestered during a lunch break.)

Recommended Order of Online Administration for the ELA Tests

The ELA assessment is comprised of two components (tests): an adaptive portion and a writing test. The West Virginia Department of Education recommends students take these two tests on separate days.



8.4 Sensitive Responses

Taking Appropriate Action with Student Responses or Student Actions that Cause Concern

Throughout the test administration process, student safety is always the primary consideration.

Security protocols make it clear TAs are not permitted to review student responses in the testing platform or students' notes on scratch paper. However, during or after the West Virginia General Summative Assessment, a TA might unexpectedly encounter a student response raising sufficient concern to warrant adult action. Topics that may require the TA to take action include, but are not limited to, student references to:

1. Suicide
2. Criminal activity
3. Alcohol or drug use
4. Extreme depression
5. Extreme violence
6. Sexual assault or physical abuse
7. Self-harm or intent to harm others
8. Neglect

Collecting Information

Prior to administration, each TA should have a thorough understanding of school, district, and/or WVDE procedures and policies regarding documentation of student actions or concerning responses during a secure test event. The TA should document as much information as possible in accordance with school, district, and/or WVDE procedures and policies.

Escalating Information

Should the TA encounter a sensitive situation while supervising the test session, the TA should immediately report this concern in accordance with school, district, and/or WVDE procedures and policies.

9.0 Accommodations

The *Guidelines for Participation in West Virginia State Assessments* is intended for school-level personnel and decision-making teams, including Individualized Education Program (IEP), English Learners (ELs), and Section 504 teams, as they prepare for and implement the West Virginia General Summative Assessment. The Participation Guidelines provides information for classroom teachers, English language development educators, special education teachers, and instructional assistants to use in selecting and administering accommodations for those students who need them. The Participation Guidelines is also intended for assessment staff and administrators who oversee the decisions made in instruction and assessment.

The Participation Guidelines applies to all students and emphasizes an individualized approach to the implementation of assessment practices for those students who have diverse needs and participate in large-scale content assessments. The *Guidelines for Participation in West Virginia State Assessments* focuses on accommodations for the West Virginia General Summative Assessment of English language arts, mathematics, and science. At the same time, the Participation Guidelines supports important instructional decisions about and connection between accessibility and accommodations for students who participate in the West Virginia General Summative Assessment.

The *Guidelines for Participation in West Virginia State Assessments* can be found at:
<https://wv.portal.cambiumast.com>. (Test Administrator Resources)

Please be sure to review these guidelines thoroughly before test administration.

The West Virginia General Summative Assessment and Practice Tests contain embedded universal tools and accommodations. These are accessible via the computer administration system, whereas non-embedded resources are provided outside of the system; these are defined in Table 8.

Table 8: Definitions for Universal Tools and Accommodations

Type	Definition
Universal Tools	Access features of the assessments either provided as digitally delivered components of the test administration system or separate from it. Universal tools are available to all students based on student preference and selection.
Accommodations	Accommodations are changes in procedures or materials that increase equitable access during the West Virginia General Summative Assessment. Assessment accommodations generate valid assessment results for students who need them; they allow these students to show what they know and can do. Accommodations are available for students with documented IEPs, ELs with IEPs, or 504 Plans. Approved accommodations do not compromise the learning expectations, construct, grade-level standard, or intended outcome of the assessments. These are provided as embedded components of the test administration system or are non-embedded.

Accommodations must be uploaded in TIDE prior to starting a test session. Accommodation changes are uploaded every 60 minutes on a rolling basis to TIDE. The information uploaded is based on the information provided to the WVDE by the online accommodations process. Test administrators must confirm students' accommodations prior to approving students into a testing session. If a student's accommodations are incorrect, please contact your SC before allowing the student to begin testing.

For additional information about the availability of accommodations, refer to the *Guidelines for Participation in West Virginia State Assessments* on the [West Virginia Portal](#) (Test Administrator Resources, General Information).

The multiplication table and 100s number table are non-embedded accommodations and are available for Grade 4 and above mathematics assessments. These non-embedded resources need to be downloaded from the [West Virginia Portal](#) (go to Resources, Ancillary Materials, Math Materials) and printed prior to test administration. They are also located in *Appendix G: Multiplication Table and 100s Number Table*.



These resources are only allowed as an accommodation for students in Grades 4-8 with a documented and persistent calculation disability (i.e. dyscalculia).

10.0 Prior to Test Administration

10.1 Establishing Appropriate Testing Conditions

District test coordinators (DCs) and school test coordinators (SCs) will need to work together to determine the most appropriate testing schedule based on the number of computers available, the number of students in each tested grade, the estimated time needed to complete each test, and health department guidelines. Testing students in classroom-sized groups is preferable; however, testing in social distanced smaller groups is acceptable.

The test administration should be conducted in a secure environment (see section 4.1 *Security of the Test Environment*).

Maintain a quiet testing environment throughout the test session. Some students will finish more quickly than others. If students are expected to remain in the testing room until the end of the session, instruct them on what activities they may quietly engage in after they finish the test. If students are allowed to leave the testing room when they finish, explain the procedures for leaving without disrupting others and where they are expected to report once they leave.

During test administration, students may have access to and use of the additional required resources listed in Table 10. These resources are specific to each assessment and content area.

Table 9: Additional Required Resources

Assessment		Resources
ELA	Reading	<ul style="list-style-type: none"> Headphones are required for the listening portion for all students. Headphones are required for students requiring text-to-speech.
	Writing	<ul style="list-style-type: none"> Scratch paper should be provided for note taking if necessary.
Mathematics		<ul style="list-style-type: none"> Headphones are required for students requiring text-to-speech. An embedded calculator will be available for some mathematics items in Grade 6 and above. Scratch paper is required for all grades. Graph paper is also recommended for Grade 6 and above.
Science		<ul style="list-style-type: none"> Headphones are required for all students. An embedded calculator will be available. Scratch paper is required for all grades.

10.2 Tasks to Complete Prior to Test Administration

- ✓ DCs, SCs, and TAs should ensure students are provided the opportunity to practice using the Practice Test prior to testing.
- ✓ **DCs, SCs, and TAs must ensure all state and local health and safety guidelines are being followed before testing begins**

It is highly recommended ALL students be provided the opportunity to take the Practice Test. This allows students the opportunity to become familiar with all item types, universal tools, buttons, and any allowable accommodations.

- ✓ DCs and SCs should ensure all TAs have login information for the TA interface within the Test Delivery System.

- ✓ DCs, SCs, and TAs should verify student demographic information and test settings.

Each student must be correctly assigned to his or her district, school, and grade in TIDE. Records are uploaded nightly from the WVDE.

In addition to the correct school and grade, DCs, SCs, and TAs should verify all students have accurate test settings in TIDE, including accommodations (embedded and non-embedded) for each content area prior to testing. Student information cannot be edited except for the following locally-set accommodations: default font size, background color, and turning off universal tools which occurs in TDS prior to the start of the test.



IMPORTANT: Changes to student information, excluding locally-set accommodations, must be completed through the nightly upload process – which may take 24-48 hours to appear in TIDE/TDS. Failure to correct test settings before testing could result in student(s) not being provided with the needed accommodations at the time of testing. This is considered a testing irregularity.

For information on how to view student information, please refer to the *TIDE User Guide* located on the [West Virginia Portal](#).



It is important for anyone with access to student information to remember student personal information, including the student's SSID, is confidential. If materials containing student personal information and/or SSIDs are distributed to students, these materials must be collected before the students leave the testing room and either securely stored to be used in a subsequent test session or shredded. For additional information about security protocols, refer to section 4.0 *Ensuring Test Security* of this manual.

- ✓ SCs should ensure TAs have necessary student login information.

Each student will log in to the West Virginia General Summative Assessment using his or her first name (first name in WVEIS), SSID (WVEIS or Assessment ID number) and a test session ID. Prior to starting a test session, TAs must have a record of each student's first name, grade, and SSID as it appears in TIDE. This information may be exported from TIDE as an Excel spreadsheet. Please see the TIDE User Guide for more information.



When a TA creates a test session, a unique session ID is randomly generated. This session ID must be provided to students before they log in. Please refer to the *Test Delivery System User Guide* located on the [West Virginia Portal](#) for detailed information on how to obtain session IDs.

When students move within the state, their data record must be updated in WVEIS to reflect the student's current enrollment. Changes to the student's WVEIS information will enable student settings to be viewed within one to three hours in the new school or district. Students moving within the state may test in any school or district; however, student information may be viewed only by the district/school of WVEIS record.

Students new to WVEIS (transferring in from out of state or nonpublic schools) cannot test until student information has been uploaded into TIDE. These students will take at least 48 hours to appear in TIDE. Once student information is in TIDE, test administration for the student may proceed.

11.0 Day of Test Administration – Online Test



Use the following information and scripts to assist students with the login procedures. Please refer to the *Test Delivery System User Guide* on the [West Virginia Portal](#) to become familiar with the Test Delivery System (TDS).

The test administrator (TA) should verify the security of the testing environment prior to beginning a test session. (See section 4.1 *Security of the Test Environment*.) TAs must ensure students do not have access to non-approved digital, electronic, or manual devices during testing.

The TA should verify students have access to and use of the additional required resources in Table 10 specific to each assessment and content area.

To ensure all students are tested under the same conditions, the TA should adhere strictly to the script for administering each test. Scripts and instructions for both online administration and paper-pencil administration are located in this section.

When asked, the TA should answer questions raised by students but should never help the class or individual students with specific test items. No test items can be read to any student for any content area, unless specified as an accommodation as listed in the *Guidelines for Participation in West Virginia State Assessments*.

Please remember the scripts must be followed exactly and used each time a test is administered. All directions a TA needs to read to students are indicated by the word “SAY” and are in boxes so they stand out from the regular text. They should be read exactly as they are written, using a natural tone and manner. If the TA makes a mistake in reading a direction, the TA should stop and say, “I made a mistake. Listen again.” Then the direction should be reread.

The TA should try to maintain a natural classroom atmosphere during the test administration. Before each test begins, he or she should encourage students to do their best.



IMPORTANT: Students should be cautioned to NOT use the Function Key as it can cause the secure browser to think the computer is not secure, causing the student to be kicked out of the test session.

11.1 Administering the West Virginia General Summative Assessment - SCRIPTS

Generic Script for ELA (except Writing), Mathematics, and Science Tests - (TA must follow directions for specific tests.)

Starting a Test Session

The TA must create a test session before students can log in (but no more than 20 minutes prior or the system will time out). When a TA creates a test session, a unique session ID is randomly generated. This session ID must be provided to the students before they log in and should be written down. TAs should follow these steps to begin a test session:

1. *Launch the Secure Browser on student testing device(s).*
2. *The TA may launch the Secure Browser prior to the student(s) entering the testing room, or the TA may instruct the student(s) to launch the Secure Browser. This decision is a local decision. If students launch the Secure Browser, the TA must read the following script.*
3. *If the students are to launch the secure browser, read the script below:*

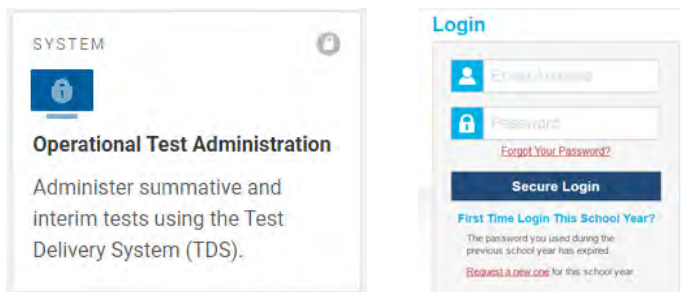
SAY: Please locate the Secure Browser icon on your desktop. Launch the browser.



IMPORTANT: The Secure Browser must be launched.

4. *The TA logs in to the TA Interface link.*

The TA accesses the Test Delivery System TA interface via the Operational Test Administration link on the [West Virginia Portal](#). The TA then enters his or her username and password and clicks [Log In] to log in to the TA Interface.



5. *The TA creates a test session.*

The test selection box appears upon login to the system. In the Test Selection window:

- Click on the + sign next to content area of the assessment to be given, and
- Select the appropriate grade and test.



Students will only be able to see and access those assessments for which they are eligible in TIDE. Completed assessments are shown in gray type.

6. *The TA begins the test session.*

After clicking on the assessment to be administered during the test session, the TA clicks on the [Start Operational Session] button to begin the test session and generate the session ID students use to join the test session.

7. *The TA informs students of the test session ID.*

The system-generated session ID appears in the top-right corner of the screen.

SAY: Today, you will take the West Virginia General Summative Assessment [*NAME OF TEST (e.g., ELA Reading Grade 4)*] Test. You will be given a test session ID that is required to start the test. Before logging in, let's go over some test rules.

You must answer each question on the screen before clicking NEXT. If you are unsure about an answer, provide what you think is the best answer. If you would like to review that answer later, mark the item for review before going on to the next question. You may go back and change the answer during this test session.

You may pause at any point in the test by clicking PAUSE rather than NEXT after answering a question. Please raise your hand if you need a break and ask permission before clicking PAUSE.

Additional information for mathematics tests

No calculators are permitted for Grades 3–5. Grade 6 has both a no-calculator and a calculator segment. During the calculator segment, students will have access to an embedded calculator. Students in Grades 7 and 8 will have access to an embedded calculator during the entire test.

For Grade 6 Mathematics Tests Only:

SAY: This test is divided into two segments. There is a calculator segment and a no-calculator segment. Once you have answered all items in the calculator segment, review your answers before moving into the no-calculator segment. Once you move into to the no-calculator segment, you will not be able to return to the calculator segment.

For all tests:

SAY: If you pause your test for more than 20 minutes, you will not be able to go back and change your answers.

SAY: Your answers need to be your own work. Please keep your eyes on your own test and remember, there should be no talking. If you have a cell phone or smartwatch, please raise your hand and I will collect it before the test begins.

SAY: If you finish your test early, please raise your hand and sit quietly.

Give students the test session ID and other login information. The test session ID, the statewide student identifier (SSID), and the student's first name may be provided to students ahead of time on a card or piece of paper to help them type it in the computer accurately. Student information is confidential; therefore, the cards/papers with this information must be collected after each test session and securely destroyed after testing is complete.

The TA should write down the session ID for his or her own records, in case he or she gets involuntarily logged out of the system. The TA will be logged out of the session if there is no activity for 20 minutes by the TA or a student. Having the session ID will allow the TA to resume the session.

TAs also may write the test session ID on a classroom dry-erase or chalk board or another place where students can see it. Make sure students know the test session ID must be entered exactly as it is written—without extra spaces or characters. Please refer to the *Test Delivery System User Guide* on the [West Virginia Portal](#) to become familiar with the online testing system.

SAY: Now we are ready to log in. Once you have logged in, you will have to wait for me to approve the test before you start. I will be checking that you have correctly entered the test session ID and other information.

SAY: Enter your legal first name, not your nickname, followed by your SSID number. Then enter the test session ID. Raise your hand if you need help typing this information on your keyboard.

SAY: Now click SIGN IN. Once you have successfully logged in, you will see a screen with your first name and other information about you. If all the information on your screen is correct, select YES to continue. If any of the information is incorrect, please raise your hand and show me what is incorrect.

Ensure all students have successfully entered their information.

The TA should ensure students use their legal first names (first name in WVEIS). If a student is unable to log in, he or she will be prompted to try again and provided with a message describing the reason (an invalid SSID, for example). If the student is still having difficulty, the TA can look up the correct information using the Student Lookup function on the TA Interface in TDS or TIDE. TAs may assist students with logging in if necessary.

8. *The TA informs students of the test session in which they are participating.*

SAY: On the next screen, select the [*INSERT NAME OF TEST (e.g., ELA Reading Grade 4)*]. After you have selected your test, you will see a screen with a moving bar and message saying you are waiting for test administrator approval. Please wait quietly while I check and approve each of your tests.



If students are resuming a test already started, instead of Start *test name* the command will be Resume *test name*.

If TAs are unsure of which content area or test students are participating in during that session, TAs should contact the school test coordinator (SC).

Students may be able to select from more than one test. TAs should direct students to select the appropriate test name based on what the TA is planning to administer at that time. Students may only select from assessments for which they are eligible.

9. *The TA views and approves students who are waiting for test session approval.*

After students have selected a test, the TA verifies each student selected the appropriate test before approving the student for testing. It is very important the TA pays close attention to the test name prior to approving to be sure it is the correct test to be administered at that time. To do this:

- a. Select the [Approvals (#)] button.
- b. A new window opens showing a list of students, organized by test name. The TA should review the list to ensure students are taking the correct content area test.
 - i. If a student selected a test other than the one the TA plans to administer to the student that day, the TA must deny the student entry to the test session. The student may then log in again and select the correct test.
- c. The TA should also review the test settings assigned to each student to ensure they are correct.
 - i. If a student's settings are incorrect, DO NOT APPROVE the student to begin testing. The TA will need to work directly with the SC or district test coordinator (DC) to ensure the test settings are correct in TIDE before approving the student to begin testing. (*Reminder: It may take 24-48 hours for*

changes to appear in the TIDE.) Ensuring the test settings are correct before the student begins testing is critical to avoid the need for a test reset resulting in additional testing for the student later.

- ii. TAs can change the default font size, text and background colors, and mouse size and color prior to the start of the test.



IMPORTANT: TAs may view student information; however, TAs cannot add, upload, or modify student information. In the Test Delivery System (TDS) on the TA interface dashboard, a TA can change the default font size and turn off universal tools prior to the start of the test.

- d. When the correct test is selected and test settings are verified, the TA clicks [Approve].

Each student will be logging in at a different time. The TA should monitor the sessions and approve all students who are currently ready before assisting any students who are having problems.

SAY: After I approve you to begin testing, you may see a screen that prompts you to check that the video and sound on your computer are working. Put your headsets on and click the play button to hear the sound and see the video move. If you hear the chime, click **I COULD PLAY THE VIDEO AND SOUND**. If not, raise your hand. When you are ready, click **CONTINUE**.

For students with Text-to-Speech, they will be asked to check the audio at this time. Please confirm these students have no audio issues.

If a student's volume is not working, troubleshoot basic steps such as ensuring the headset is fully plugged in, mute is not inadvertently selected, and the volume setting is turned up. If the testing device continues to have audio problems, try a different computer, should one be available. Should audio problems persist, contact your SC.

SAY: Before your test appears, you will see an Instructions and Help page. You may review the Help Guide, your Test Settings, and Additional Test Information here. The Help Guide lists the test tools and buttons you may use during the test or that will appear on the test. Please read this carefully. You may select the question mark button in the top right corner during the test to access the Help Guide.

SAY: You must answer each question on the screen before going on to the next page. If you are unsure of an answer, provide what you think is the best answer.

If you would like to review an answer later, mark the item for review by opening the context menu in the upper-right corner of the question and clicking [Flag for Review] before going on to the next question. Flagging the item will remind you to go back and decide whether you want to change the answer.

SAY: Are there any questions?

Answer student question(s).

SAY: The PAUSE button is used to stop the test. You may PAUSE at any point in the test by clicking PAUSE rather than NEXT after answering an item. Before PAUSING the test, raise your hand and talk with me. PAUSING for more than 20 minutes will prevent you from changing any answer on previous pages of the test.

SAY: Are there any questions?

Answer student question(s).

After answering the last question on the test, each student is presented with a screen prompting him or her to review all answers, including those marked for review.

A test cannot be paused after the last item has been presented to the student.



After answering the last question, students must submit their tests. If students would like to review their answers before submitting their test, they should click [REVIEW MY ANSWERS], review their answers, and then [SUBMIT TEST] after they have finished reviewing.

Once a student clicks [SUBMIT TEST], the student will not be able to review answers.

SAY: There may be items on this test that ask you to select word(s) or phrase(s). To determine which word(s) or phrase(s) may be selected, move the cursor over the text – when the cursor becomes a pointing hand, that word or phrase may be selected.

SAY: Are there any questions?

Answer student question(s).

SAY: Your answers need to be your own work. Please keep your eyes on your own test and remember there should be no talking.

SAY: When you have finished your test, you will be asked to review items. Review your items and then click SUBMIT

TEST. If you have any questions about how to submit your test, please raise your hand.

SAY: Click BEGIN TEST NOW at the bottom of the page.

10. The TA monitors student progress.

Monitoring Test Selection

It is very important TAs monitor student progress throughout the test session. This includes verifying students are participating in the appropriate content area test.

The TA monitors the test each student is taking by referring to the “Students in Your Test Session” table in the TA Interface in the TDS.

In the event a student is taking an incorrect test, the TA can pause the student’s test. The TA should then instruct the student to log out and log in again to select the correct test. The TA must notify the SC, who would complete the Test Security Incident Log.

Monitoring Test Progress

Once students have started their tests, the TA should circulate through the room to ensure all conditions of test security are maintained. If the TA witnesses or suspects the possibility of a test security incident, the SC should be contacted immediately. The SC will work with the DC to mitigate the incident in accordance with WVBE Policy 2340.

The TA also may use the TA Interface in the TDS to view the testing progress of any student. This site will not show test items or scores but will let the TA see how many items have been delivered to each student (e.g., question 24/40).

While the TA Interface is designed to automatically refresh every minute, the TA can refresh it manually at any time by clicking the [Refresh Now] button at the top left of the page. Do NOT click the web browser’s refresh button to refresh the TA Interface.

If the TA notices a student is off task and believes a break from testing will benefit the student, the TA may say the following statement verbatim.



SAY: It is important you do your best. Do you need to pause the test and take a break?

If a student asks for assistance either in answering an item or manipulating an item type, the TA should gently instruct the student to review the tutorial located in the context menu at the upper right of the item for help and let the student know he or she should try his or her best, but the TA cannot help answer an item. The TA may remind the student to reread the instructions for the item.



SAY: Try your best and choose the answer that makes the most sense to you. If you are unsure about how a question works,

you can review a tutorial by clicking on the “i” button on the right side of the screen.

IMPORTANT:

- If the TA is using the TA Interface and navigates to another Cambium system (TIDE, ORS, etc.), the session will stop, and all students in the session will be logged out. The session cannot be resumed. A new session will have to be created, and the students will have to log in to the new session to resume testing. When starting a new session, give the new session ID to the students so they can log in and resume testing.
- If the TA Interface is accidentally closed while students are still testing, the session will remain open until it times out after 20 minutes. The TA can open the browser and navigate back to the TA Interface. The TA will be prompted to enter the active session ID.
- As a security measure, TAs are automatically logged out of the TA Interface after 20 minutes of TA user inactivity and student inactivity in the test session, which will result in closing the test session. If this occurs, the TA will have to create a new session, and the students will have to log in to the new session to resume testing. When starting a new session, the TA should give the students the new session ID so they can log in and resume testing. Please note students will not be able to return to items from previous sessions, even if the responses were marked for review.

11. Ending the test session and logging out of the Test Administrator Site after all students have finished testing.

The West Virginia General Summative Assessment is an untimed test. The test session is complete when all students have finished testing and submitted their tests. Once students have submitted their tests they should either sit quietly with a non-content related activity or go to a previously designated area. Students should not be permitted to be on any electronic devices.

After all students have submitted their tests, TAs should click [Stop Session] to end the test session. When finished, TAs can log out of the TA Interface by clicking the [Logout] button at the top right. TAs should collect any scratch paper.

SAY: This test session is now over. I will now collect any scratch paper or other materials.

Generic Script for Writing Tests

Note: The ELA Writing Test must be completed in one session. (The only exception is students who are sequestered during a lunch break.)

Starting a Test Session

The TA must create a test session before students can log in (but no more than 20 minutes prior or the system will time out). When a TA creates a test session, a unique session ID is randomly generated. This session ID must be provided to the students before they log in and should be written down. TAs should follow these steps to begin a test session:

1. *Launch the Secure Browser on student testing device(s).*
2. *The TA may launch the Secure Browser prior to the student(s) entering the testing room, or the TA may instruct student(s) to launch the Secure Browser. This decision is a local decision. If students launch Secure Browser, the TA must read the following script.*
3. *If the students are to launch the secure browser, read the script below:*

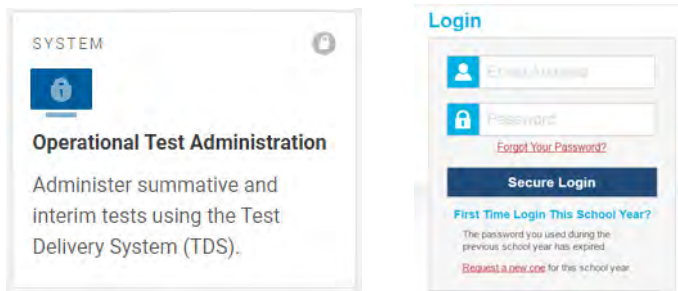
SAY: Please locate the Secure Browser icon on your desktop.
Launch the browser.



IMPORTANT: The Secure Browser must be launched.

4. *The TA logs in to the TA Interface link.*

The TA accesses the Test Delivery System TA interface via the Operational Test Administration link on the [West Virginia Portal](https://wv.portal.cambiumast.com/) at <https://wv.portal.cambiumast.com/>. The TA then enters his or her username and password and clicks [Log In] to log in to the TA Interface.



5. *The TA creates a test session.*

The test selection box appears upon login to the system. In the Test Selection window:

- Click on the + sign next to ELA, and
- Select the appropriate grade and writing test



Students will only be able to see and access those assessments for which they are eligible in TIDE. Completed assessments are shown in gray type.

6. *The TA begins the test session.*

After clicking on the assessment to be administered during the test session, the TA clicks on the [Start Operational Session] button to begin the test session and generate the session ID students use to join the test session.

7. *The TA informs students of the test session ID.*

The system-generated session ID appears in the top-right corner of the screen.

SAY: Today, you will take the West Virginia General Summative Assessment English Language Arts - Writing Test. You will be given a test session ID that is required to start the test. Before logging in, let's go over some test rules.

Please raise your hand if you need a break and ask permission before clicking PAUSE.

SAY: Your response needs to be your own work. Please keep your eyes on your own test and remember, there should be no talking. If you have a cell phone or smartwatch, please raise your hand and I will collect it before the test begins.

SAY: If you finish your test early, please raise your hand and sit quietly.

Give students the test session ID and other log-in information. The test session ID, the statewide student identifier (SSID), and the student's first name may be provided to students ahead of time on a card or piece of paper to help them type it in the computer accurately. Student information is confidential; therefore, the cards/papers with this information must be collected after each test session and securely destroyed after testing is complete.

The TA should write down the session ID for his or her own records, in case he or she gets involuntarily logged out of the system. The TA will be logged out of the session if there is no activity for 20 minutes by the TA or a student. Having the session ID will allow the TA to resume the session.

TAs also may write the test session ID on a classroom dry-erase or chalk board or another place where students can see it. Make sure students know the test session ID must be entered exactly as it is written—without extra spaces or characters. Please refer to the *Test Delivery System User Guide* on the [West Virginia Portal](#) to become familiar with the online testing system.

SAY: Now we are ready to log in. Once you have logged in, you will have to wait for me to approve the test before you start. I'll be checking that you have correctly entered the test session ID and other information.

SAY: Enter your legal first name, not your nickname, followed by your SSID number. Then enter the test session ID. Raise your hand if you need help typing this information on your keyboard.

SAY: Now click SIGN IN. Once you have successfully logged in, you will see a screen with your first name and other information about you. If all of the information on your

screen is correct, select YES to continue. If any of the information is incorrect, please raise your hand and show me what is incorrect.

Ensure all students have successfully entered their information.

The TA should ensure students use their legal first names (first name in WVEIS). If a student is unable to log in, he or she will be prompted to try again and provided with a message describing the reason (an invalid SSID, for example). If the student is still having difficulty, the TA can look up the correct information using the Student Lookup function on the TA Interface in TDS or TIDE. TAs may assist students with logging in if necessary.

8. *The TA informs students of the test session in which they are participating.*

SAY: On the next screen, select the Grade [#] ELA – Writing Test. After you have selected your test, you will see a screen with a moving bar and message saying you are waiting for test administrator approval. Please wait quietly while I check and approve each of your tests.



If students are resuming a test already started, instead of Start *test name* the command will be Resume *test name*.

Students may be able to select from more than one test. TAs should direct students to select the appropriate test name based on what the TA is planning to administer at that time. Students may only select from assessments for which they are eligible.

9. *The TA views and approves students who are waiting for test session approval.*

After students have selected a test, the TA verifies each student selected the appropriate test before approving the student for testing. It is very important the TA pays close attention to the test name prior to approving to be sure it is the correct test to be administered at that time. To do this:

- e. Select the [Approvals (#)] button.
- f. A new window opens showing a list of students, organized by test name. The TA should review the list to ensure students are taking the correct content area test.
 - i. If a student selected a test other than the one the TA plans to administer to the student that day, the TA must deny the student entry to the test session. The student may then log in again and select the correct test.
- g. The TA also should review the test settings assigned to each student to ensure they are correct.
 - i. If a student's settings are incorrect, DO NOT APPROVE the student to begin testing. The TA will need to work directly with a school test coordinator or district test coordinator to ensure the test settings are correct in TIDE before

approving the student to begin testing. *(Reminder: It may take 24-48 hours for changes to appear in TIDE.)* Ensuring the test settings are correct before the student begins testing is critical to avoid the need for a test reset resulting in additional testing for the student later.

- ii. TAs can change the default font size and turn off universal tools prior to the start of the test.



IMPORTANT: TAs may view student information; however, TAs cannot add, upload, or modify student information. In the Test Delivery System (TDS) on the TA interface dashboard, a TA can change the default font size and turn off universal tools prior to the start of the test.

- h. When the correct test is selected and test settings are verified, the TA clicks [Approve].

SAY: After I approve you to begin testing, you may see a screen that prompts you to check that the video and sound on your computer is working. Put your headsets on and click the play button to hear the sound and see the video move. If you hear the chime, click I COULD PLAY THE VIDEO AND SOUND. If not, raise your hand. When you are ready, click CONTINUE.

Each student will be logging in at a different time. The TA should monitor the sessions and approve all students who are currently ready before assisting any students who are having problems.

For students with Text-to-Speech, they will be asked to check the audio at this time. Please confirm these students have no audio issues.

If a student's audio is not working, troubleshoot basic steps such as ensuring the headset is fully plugged in, mute is not inadvertently selected, and the volume setting is turned up. If the testing device continues to have audio problems, try a different computer, should one be available. Should audio problems persist, contact your SC.

SAY: Before your test appears, you will see an Instructions and Help page. You may review the Help Guide, your Test Settings, and Additional Test Information here. The Help Guide lists the test tools and buttons you may use during the test or that will appear on the test. Please read this carefully. You may select the question mark button in the top right corner during the test to access the Help Guide.

SAY: Are there any questions?

Answer student question(s).

- SAY: Today's writing test has one or more passages to read and one prompt requiring your response.
- SAY: You may use the embedded dictionary and thesaurus. You may use scratch paper. When you have finished planning your response, you must enter your final response into the test on the computer.
- SAY: Remember your work must address the writing prompt and passages. Write only about the topic you have been given.
- SAY: When you have finished your test, click the End Test button and then you will be asked to review your response. Review your response and then click SUBMIT TEST. If you have any questions about how to submit your test, please raise your hand.
- SAY: Manage your time carefully so you can read the passages; plan your response; write your response; and review and edit your response.
- SAY: Be sure to include an introduction, information from the passages as support, and a conclusion.
- SAY: Your response should be in the form of a multi-paragraph essay. As you type your response, you will see a character count at the bottom of the screen. You may not write more than 4,000 characters.
- SAY: This test is not timed. However, you must complete the test by the end of this session during school hours today.
- SAY: Are there any questions?

Answer student question(s).

SAY: Click BEGIN TEST NOW at the bottom of the page.

Although the test is not timed, the approximate time for this section is two hours. If a student needs additional time, you must provide it. However, if during the additional time, the student stops for more than 10 minutes, it is recommended you end the test.

10. The TA monitors student progress.

Monitoring Test Selection

It is very important TAs monitor student progress throughout the test session. This includes verifying students are participating in the appropriate content area test.

The TA monitors the test each student is taking by referring to the “Students in Your Test Session” table in the TA Interface in the TDS.

In the event a student is taking an incorrect test, the TA can pause the student’s test. The TA should then instruct the student to log out and log in again to select the correct test. The TA must notify the SC, who would complete the Test Security Incident Log.

Monitoring Test Progress

Once students have started their tests, the TA should circulate through the room to ensure all conditions of test security are maintained. If the TA witnesses or suspects the possibility of a test security incident, the SC should be contacted immediately. The SC will work with the DC to mitigate the incident in accordance with WVBE Policy 2340.

While the TA Interface is designed to automatically refresh every minute, the TA can refresh it manually at any time by clicking the [Refresh Now] button at the top left of the page. Do NOT click the web browser’s refresh button to refresh the TA Interface.

If the TA notices a student is off task and believes a break from testing will benefit the student, the TA may say the following statement verbatim.



SAY: It is important you do your best. Do you need to pause the test and take a break?

If a student asks for assistance, the TA should gently instruct the student to try his or her best, but the TA cannot help answer with the response.

IMPORTANT:

- If the TA is using the TA Interface and navigates to another Cambium system (TIDE, ORS, etc.), the session will stop, and all students in the session will be logged out. The session cannot be resumed. A new session will have to be created, and the students will have to log in to the new session to resume testing. When starting a new session, give the new session ID to the students so they can log in and resume testing.
- If the TA Interface is accidentally closed while students are still testing, the session will remain open until it times out after 20 minutes. The TA can open the browser and navigate back to the TA Interface. The TA will be prompted to enter the active session ID.
- As a security measure, TAs are automatically logged out of the TA Interface after 20 minutes of TA user inactivity and student inactivity in the test session, which will result in closing the test session. If this occurs, the TA will have to create a new session, and the students will have to log in to the new session to resume testing. When starting a new session, the TA should give the students the new session ID so they can log in and resume testing. Please note students will not be able to return to items from previous sessions, even if the responses were marked for review.

11. Ending the test session and logging out of the Test Administrator Site after all students have finished testing.

The West Virginia General Summative Assessment is an untimed test. The test session is complete when all students have finished testing and submitted their tests. Once students have submitted their tests they should either sit quietly with a non-content related activity

or go to a previously designated area. Students should not be permitted to be on any electronic devices.

After all students have submitted their tests, TAs should click [Stop Session] to end the test session. When finished, TAs can log out of the TA Interface by clicking the [Logout] button at the top right. TAs should collect any scratch paper.

SAY: This test session is now over. I will now collect any scratch paper or other materials.

Collect all scratch paper. Scratch paper contains secure information and must be shredded by the school test coordinator.

12.0 Following Test Administration

12.1 Destroying Test Materials



Federal law—the Family Educational Rights and Privacy Act—prohibits the release of any student’s personally identifiable information. Any printed materials must be securely stored and then shredded.

As a reminder, those printed and paper test materials identified in section *4.0 Ensuring Test Security* must be securely shredded immediately following each test session and may not be retained.

12.2 Reporting Testing Irregularities and Breaches

Throughout testing, ensure all test security incidents were reported in accordance with the guidelines in sections *4.0 Ensuring Test Security* and *5.0 Responding to Testing Irregularities* in this manual.

13.0 Day of Test Administration – Pencil-Paper Test

The test administrator (TA) should verify the security of the testing environment prior to beginning a test session. (See section 4.1 *Security of the Test Environment*.) TAs must ensure students do not have access to non-approved digital, electronic, or manual devices during testing.

The TA should verify students have access to and use of the additional required resources in Table 10 specific to each assessment and content area.

To ensure all students are tested under the same conditions, the TA should adhere strictly to the script for administering each test. Scripts and instructions for both online administration and paper-pencil administration are located in this section.

When asked, the TA should answer questions raised by students but should never help the class or individual students with specific test items. No test items can be read to any student for any content area, unless specified as an accommodation as listed in the *Guidelines for Participation in West Virginia State Assessments*.

Please remember the scripts must be followed exactly and used each time a test is administered. All directions a TA needs to read to students are indicated by the word “SAY” and are in boxes so they stand out from the regular text. They should be read exactly as they are written, using a natural tone and manner. If the TA makes a mistake in reading a direction, the TA should stop and say, “I made a mistake. Listen again.” Then the direction should be reread.

The TA should try to maintain a natural classroom atmosphere during the test administration. Before each test begins, he or she should encourage students to do their best.

13.1 Preparing for Paper-Pencil Testing

Test administrators should:

- Have a copy of the Test Administration Manual;
- Check out testing materials from the school test coordinator at the beginning of each day of testing;
 - WVGSA content area test booklet for content area being assessed
 - Dictionaries and thesauruses for ELA tests
 - Calculators for mathematics tests – Grades 6-8
 - WVS.326 forms
 - Pencils
 - Scratch paper
 - Graph paper for mathematics tests – Grades 6-8
 - Test Security Incident Log
 - “Do Not Enter – Testing in Progress” sign for door
- Keep testing materials secure at all times; and
- Return all materials to the school test coordinator at the end of each day of testing.

13.2 Paper Administration Precautions

Students must enter all responses in test booklets.

Do not photocopy test booklets.

Do not disassemble or pull pages from the test booklets.

Do not erase any stray marks, duplicate responses, or any other student-created response from a student test booklet.

WVGSA Calculator Policy for Paper-Pencil Tests

Calculators are permitted on some mathematics tests. On tests where calculators are permitted, it is ideal for a student to use the recommended acceptable calculator. If the recommended calculator is not available, students may use a calculator with less functionality.

WVGSA Calculators

Test/Grade	Calculator Policy
Mathematics Grades 3-5	No calculators permitted.
Mathematics Grade 6	Scientific calculators permitted on the first portion of section 1 of the test. No calculators are permitted on the second portion of section 1 or on section 2.
Mathematics Grades 7-8	Scientific calculators are permitted. Scientific calculators should include these functions: <ul style="list-style-type: none"> Standard four functions (addition, subtraction, multiplication, division), decimal, change sign (+/-), parentheses, square root, and π. The calculator may NOT include: <ul style="list-style-type: none"> Any problem solving or programing capabilities, place values, and inequalities. Sample acceptable calculator: TI-30X IIS or similar.

Additional Calculator Guidance

- No laptop, tablet, or phone-based calculators are allowed to be used during the WVGSA assessment.
- Students are not allowed to share calculators during a testing session.

13.3 Administering the West Virginia General Summative Assessment - SCRIPTS

The WVGSA ELA Reading, Mathematics, and Science Tests are each administered in two sections. There is a break between test sections. The WVGSA ELA Writing Test is administered in one test session. Students using the paper-pencil tests will have three test booklets: English language arts, mathematics, and science. The English language arts booklets are divided into three sections: Reading Section 1, Reading Section 2, and Writing Section 3. Reading Sections 1 and 2 must be administered and completed on the same day. Writing Section 3 will be administered and completed on a different day. The mathematics and science test booklets are divided into two sections. Mathematics Section 1 and

Mathematics Section 2 must be administered and completed on the same day. Science Section 1 and Science Section 2 must be administered and completed on the same day.

Distribute the scratch paper and test booklets to students. Students must print their names on their test booklets. Do not allow students to use ink, colored pens/pencils, markers, or highlighters in their test booklets. Students may use a No. 2 pencil for any annotation or underlining.

For the Grades 6-8 mathematics tests, students may use approved calculators. For Grade 6, the students must only have access to calculators for the first portion of Section 1 of the test.

Script for English Language Arts – Reading Test

Distribute the appropriate test booklets and scratch paper to each student.

ELA – Reading, Section 1

SAY

Today, you will be taking the West Virginia General Summative Assessment English Language Arts – Reading Test.

Do not open your test booklet until I tell you to do so. Talking during the test is not allowed, and you may not discuss the questions or your answers during the break or after the test. Keep your eyes on your own test booklet.

Personal electronic devices, including but not limited to cell phones and smartwatches, are not permitted during the test or break.

Any student who has any personal electronic device in his or her possession during this test session may have his or her test invalidated.

If you have a question or need help with something during the test, raise your hand, and I will come to you.

This test is not timed. However, you must complete the test by the end of today's school day.

Are there any questions?

Answer any questions.

SAY

On the front cover of your test booklet you will see a place to print your legal name. On the line please print your name and student number (your 9-digit WVEIS or lunch number).

Make sure students complete the information correctly.

SAY

Today's reading test contains several reading passages followed by questions about those passages. You may refer back to the passages when answering the questions. You will mark your answers in the test booklet by filling in the bubble or bubbles that match the answer you choose.

Before you test, please remember the following:

- Use a No. 2 pencil for your answers.
- You may write in your test booklet, but do not write or mark near the bubbles where you will fill in your answers.
- Do not use ink, colored pens/pencils, markers, or highlighters in your test booklet. You can use your No. 2 pencil for any annotations or underlining.
- If you want to change an answer, completely erase the mark you made before making a new mark.

The reading test has two sections. We will begin with Section 1. When you finish Section 1, you will see the stop sign. Do not go beyond the stop sign.

When you finish Section 1, please check your answers in Section 1. Be sure to check the following:

- Every question in this part of the test booklet has been answered;
- For answers with bubbles, the bubbles are filled in completely; and
- All other bubbles are empty.

You may not go ahead to any other part of this test booklet at any time.

Are there any questions?

Answer any questions.

SAY

Open your test booklet to Page 2.

Make sure all students have turned to the correct page.

SAY

Page 2 contains the directions for the ELA – Reading Test.

We will read the directions together.
Directions:

1. Read each question carefully. Think about what is being asked. Then choose the answer you think is best.
2. Fill in the circle next to your answer choice or choices. If you change your answer, make sure you erase your old answer completely. Do not cross out or make any marks on the other choices.
3. If you do not know the answer to a question, skip it and go on to the next questions. If you have time, go back to the questions you skipped and try to answer them before turning in your Student Test Booklet.
4. Check your work when you are finished.

Are there any questions?

Answer any questions.

When you see the words **GO TO NEXT PAGE** at the bottom of the page, turn the page and continue working. When you come to the word **STOP**, you have finished Section 1.

SAY

You may go back and check your answers in this section only. After you have checked your answers to the questions, close your test booklet.

Then, sit quietly and work on some activity while others are completing the test.

Are there any questions?

Answer any questions.

SAY

This test is not timed.

Now turn the page, and you may begin Section 1 of the reading test.

Make sure all students have turned to the correct page in their test booklets. While students are taking Section 1 of the reading test, move around the room and make sure students are progressing through the test. Test administrators may answer student questions about test directions. Test administrators may not answer student questions about test content.

Although the test is not timed, the approximate time for this section is 45 minutes. If a student needs additional time, you must provide it. However, if during the additional time, the student stops for more than 10 minutes without closing his or her test booklet, it is recommended you end the test.

When all students are finished, continue with the directions.

SAY

This is the end of Section 1. We are now going to take a break. You are not allowed to discuss the test or its contents or use any electronic devices during the break.

Have students put their scratch paper inside their test booklets. Follow security procedures during the break.

Ten-Minute Break

ELA – Reading, Section 2

SAY

You will use the same test booklet for all ELA test sessions. Please check to see the test booklet in front of you has your name on the front cover.

Make sure each student has his or her own test booklet.

SAY

You are now going to begin Section 2 of the ELA – Reading Test. Open your test booklet to Section 2.

SAY

When you see the words GO TO NEXT PAGE at the bottom of the page, turn the page and continue working. When you come to the word STOP, you have finished Section 2.

You may go back and check your answers in this section only. After you have checked your answers to the questions, close your test booklet.

Then, sit quietly and work on some activity while others are completing the test.

Are there any questions?

Answer any questions.

SAY

This test is not timed.

Now turn the page, and you may begin Section 2 of the reading test.

Make sure all students have turned to the correct page in their test booklets. While students are taking Section 2 of the reading test, move around the room and make sure students are progressing through the test. Test administrators may answer student questions about test directions. Test administrators may not answer student questions about test content.

Although the test is not timed, the approximate time for this section is 45 minutes. If a student needs additional time, you must provide it. However, if during the additional time, the student stops for more than 10 minutes without closing his or her test booklet, it is recommended you end the test.

When all students are finished, continue with the directions.

SAY This is the end of Section 2. Sit quietly while I collect all the materials.

Collect all test booklets and record their return on the Security Checklist. Collect all scratch paper. Scratch paper contains secure information and must be shredded by the school test coordinator.

Script for English Language Arts – Writing Test

Note: The ELA – Writing Test must be completed in one session. (The only exception is students who are sequestered during a lunch break.)

Distribute the appropriate test booklets, scratch paper, dictionaries, and thesaurus to each student.



This test does not have a break scheduled for students. It is recommended students be allowed to take a break, if needed. Students in the testing room and students on break must be monitored at all times.

SAY

Today, you will be taking the West Virginia General Summative Assessment English Language Arts – Writing Test.

Do not open your test booklet until I tell you to do so. Talking during the test is not allowed, and you may not discuss the questions or your answers during the break or after the test. Keep your eyes on your own test booklet.

Personal electronic devices, including but not limited to cell phones and smartwatches, are not permitted during the test or break.

Any student who has any personal electronic device in his or her possession during this test session may have his or her test invalidated.

If you have a question or need help with something during the test, raise your hand, and I will come to you.

This test is not timed. However, you must complete the test by the end of this session during school hours today.

Are there any questions?

Answer any questions.

SAY

Today's writing test has one or more passages to read and one prompt requiring your response.

You may use a dictionary and thesaurus.

You may use scratch paper to plan your response. When you have finished planning your response, you must write your final response in your test booklet on the three pages designated "Final Copy." Your final response may be in cursive or printed letters. However, it is important that your response be legible.

Remember your work must address the writing prompt and passages. Write only about the topic you have been given.

Before you test, please remember the following:

- Use a No. 2 pencil for your writing response.
- Do not use ink, colored pens/pencils, markers, or highlighters in your test booklet. You can use your No. 2 pencil for any annotations or underlining.
- Only what is written on the three pages marked "Final Copy" will be scored. Write only on the lines provided.
- Do not write in the margins.

Are there any questions?

Answer any questions.

SAY

You will use the same test booklet for all ELA test sessions. Please check to see the test booklet in front of you has your name on the front cover.

Make sure each student has his or her own test booklet.

SAY

Please open your test booklet to Section 3 – Writing.

We will read the directions together.

Directions:

Read the writing prompt and passages. Then write your final essay on the three pages designated “Final Copy.”

Manage your time carefully so you can

- Read the passages;
- Plan your response;
- Write your response; and
- Revise and edit your response.

Be sure to include

- An introduction;
- Information from the passages as support; and
- A conclusion.

Your response should be in the form of a multi-paragraph essay. Write your response in the space provided.

Are there any questions?

Answer any questions.

When you see the words GO TO NEXT PAGE at the bottom of the page, turn the page and continue working. When you come to the word STOP, you have finished the Writing Section 3.

Go back and review your essay. You may not return to previous sections of your test booklet.

After you have completed your review, close your test booklet.

Then, sit quietly and work on some activity while others are completing the test.

Are there any questions?

SAY

Answer any questions.

This test is not timed. However, you must complete the writing test by the end of this session during school hours today.

Now turn the page, and you may begin Section 3 – the Writing Test.

SAY

Make sure all students have turned to the correct page in their test booklets. While students are taking Section 3 – the Writing Test, move around the room and make sure students are progressing through the test. Test administrators may answer student questions about test directions. Test administrators may not answer student questions about test content.

Although the test is not timed, the approximate time for this section is two hours. If a student needs additional time, you must provide it. However, if during the additional time, the student stops for more than 10 minutes without closing his or her test booklet, it is recommended you end the test.

When all students are finished, continue with the directions.

SAY

This is the end of Section 3 – the Writing Test. Sit quietly while I collect all the materials.

Collect all test booklets and record their return on the Security Checklist. Collect all scratch paper. Scratch paper contains secure information and must be shredded by the school test coordinator.

Script for Mathematics Test

Distribute the appropriate test booklets, scratch paper, and/or graph paper to each student. For Grades 6-8 distribute calculators.

Mathematics, Section 1

SAY

Today, you will be taking the West Virginia General Summative Assessment Mathematics Test.

Do not open your test booklet until I tell you to do so. Talking during the test is not allowed, and you may not discuss the questions or your answers during the break or after the test. Keep your eyes on your own test booklet.

Personal electronic devices, including but not limited to cell phones and smartwatches, are not permitted during the test or break.

Any student who has any personal electronic device in his or her possession during this test session may have his or her test invalidated.

If you have a question or need help with something during the test, raise your hand, and I will come to you.

This test is not timed. However, you must complete the test by the end of

today's school day.

Are there any questions?

Answer any questions.

SAY

On the front cover of your test booklet you will see a place to print your legal name. On the line please print your name and student number (your WVEIS or lunch number).

Make sure students complete the information correctly.

SAY

Today's mathematics test contains several types of math problems. You will mark your answers in the test booklet in the designated area for each question.

Before you test, please remember the following:

- Use a No. 2 pencil for your answers.
- You may write in your test booklet, but do not write or mark near the bubbles where you will fill in your answers.
- Do not use ink, colored pens/pencils, markers, or highlighters in your test booklet. You can use your No. 2 pencil for any annotations or underlining.
- If you want to change an answer, completely erase the mark you made before making a new mark.

The mathematics test has two sections. We will begin with Section 1. When you finish Section 1, you will see the stop sign. Do not go beyond the stop sign.

When you finish Section 1, please check your answers in Section 1. Be sure to check the following:

- Every question in this part of the test booklet has been answered;
- For answers with bubbles, the bubbles are filled in completely; and
- All other bubbles are empty.

You may not go ahead to any other part of this test booklet at any time.

Are there any questions?

Answer any questions.

SAY Open your test booklet to Page 2.

Make sure all students have turned to the correct page.

SAY Page 2 contains the directions for the mathematics test.

We will read the directions together.

Directions:

SAY

1. For questions with bubbled responses, fill in the circle next to your answer choice. If you change your answer, make sure you erase your old answer completely. Do not cross out or make any marks on the other choices.
2. For questions with response boxes, write your answer neatly, clearly, and in the space provided.

For Grades 3-5, read the following:

SAY

3. For questions with response grids,
 - a. Write your answer in the answer boxes at the top of the grid.
 - i. Write only one digit or symbol in each answer box.
 - ii. Be sure to write a fraction bar or decimal point in the answer box if it is a part of the answer.
 - b. You may fill in a bubble under each box in which you wrote your answer.
 - i. Fill in one and **ONLY** one bubble for each answer box. Do **NOT** fill in a bubble under an unused answer box.
 - ii. Fill in each bubble by making a solid mark that completely fills the circle.
 - c. You can record a mixed number in several different ways. You can write it as:
 - i. A whole number and a fraction ($5 \frac{1}{2}$). Be sure to include a space between the whole number and the fraction.
 - ii. An equivalent fraction ($11/2$).
 - iii. An equivalent decimal (5.5).

For Grades 6-8, read the following:

SAY 3. For questions with response grids,

- a. Write your answer in the answer boxes at the top of the grid.
 - i. Write only one digit or symbol in each answer box.
 - ii. Be sure to write a negative sign or decimal point in the answer box if it is a part of the answer.
- b. You may fill in a bubble under each box in which you wrote your answer.
 - i. Fill in one and **ONLY** one bubble for each answer box. Do **NOT** fill in a bubble under an unused answer box.
 - ii. Fill in each bubble by making a solid mark that completely fills the circle.

For all grades, read the following:

SAY Are there any questions?

Answer any questions.

For Grade 6, read the following:

SAY Approved calculators are allowed during the first portion of Section 1 of the test. No calculators are allowed during the second portion of Section 1 or during Section 2.

When you reach the end of the calculator portion of Section 1, raise your hand and I will collect your calculator. You may then go on to the remainder of Section 1 **ONLY**. Do not advance to Section 2 until instructed to do so.

Are there any questions?

Answer any questions.

For all grades, read the following:

SAY Be sure to read the directions within each question carefully. Some questions will require you to give your answers in different ways.

You may use scratch paper, but you need to record your answer in the test booklet.

When you see the words **GO TO NEXT PAGE** at the bottom of the page, turn

the page and continue working. When you come to the word STOP, you have finished Section 1.

You may go back and check your answers in this section only. After you have checked your answers to the questions, close your test booklet. Then, sit quietly and work on some activity while others are completing the test.

Are there any questions?

Answer any questions.

SAY

This test is not timed.

Now turn the page, and you may begin Section 1 of the mathematics test.

Make sure all students have turned to the correct page in their test booklets. While students are taking Section 1 of the mathematics test, move around the room and make sure students are progressing through the test. Test administrators may answer student questions about test directions. Test administrators may not answer student questions about test content.

Although the test is not timed, the approximate time for this section is 45 minutes for Grades 3-5 and 1 hour for Grades 6-8. If a student needs additional time, you must provide it. However, if during the additional time, the student stops for more than ten minutes without closing his or her test booklet, it is recommended you end the test.

When all students are finished, continue with the directions.

SAY

This is the end of Section 1. We are now going to take a break. You are not allowed to discuss the test or its contents or use any electronic devices during the break.

Have students put their scratch/graph paper inside their test booklets. Follow security procedures during the break.

Ten-Minute Break

Mathematics, Section 2

SAY

You will use the same test booklet for both mathematics test sections. Please check to see the test booklet in front of you has your name on the front cover.

Make sure each student has his or her own test booklet.

SAY

You are now going to begin Section 2 of the mathematics test. Open your test booklet to Section 2.

SAY

When you see the words GO TO NEXT PAGE at the bottom of the page, turn the page and continue working. When you come to the word STOP, you have finished Section 2.

You may go back and check your answers in this section only. After you have checked your answers to the questions, close your test booklet.

Then, sit quietly and work on some activity while others are completing the test.

Are there any questions?

Answer any questions.

SAY

This test is not timed.

Now turn the page, and you may begin Section 2 of the mathematics test.

Make sure all students have turned to the correct page in their test booklets. While students are taking Section 2 of the mathematics test, move around the room and make sure students are progressing through the test. Test administrators may answer student questions about test directions. Test administrators may not answer student questions about test content.

Although the test is not timed, the approximate time for this section is 45 minutes for Grades 3-5 and 1 hour for Grades 6-8. If a student needs additional time, you must provide it. However, if during the additional time, the student stops for more than ten minutes without closing his or her test booklet, it is recommended you end the test.

When all students are finished, continue with the directions.

SAY

This is the end of Section 2. Sit quietly while I collect all the materials.

Collect all test booklets and record their return on the Security Checklist. Collect all scratch/graph paper. Scratch/graph paper contains secure information and must be shredded by the school test coordinator.

All test booklets are to be returned to the school test coordinator at the end of each testing day.

Script for Science Test

Distribute the appropriate test booklets, calculators, scratch paper, and/or graph paper to each student.

Science, Section 1

SAY	<p>Today, you will be taking the West Virginia General Summative Assessment Science Test.</p> <p>Do not open your test booklet until I tell you to do so. Talking during the test is not allowed, and you may not discuss the questions or your answers during the break or after the test. Keep your eyes on your own test booklet. Personal electronic devices, including but not limited to cell phones, smartwatches, or any other electronic devices, are not permitted during the test or break.</p> <p>Any student who has any personal electronic device in his or her possession during this test session <u>may</u> have his or her test invalidated.</p> <p>If you have a question or need help with something during the test, raise your hand, and I will come to you.</p> <p>This test is not timed. However, you must complete the test by the end of today's school day.</p> <p>Are there any questions?</p>
-----	--

Answer any questions.

SAY	<p>On the front cover of your test booklet you will see a place to print your legal name. On the line please print your name and student number (your WVEIS or lunch number).</p>
-----	---

Make sure students complete the information correctly.

SAY	<p>Today's science test contains several types of problems. You will mark your answers in the test booklet in the designated area for each question.</p> <p>Before you test, please remember the following:</p> <ul style="list-style-type: none">• Use a No. 2 pencil for your answers.• You may write in your test booklet, but do not write or mark near the bubbles where you will fill in your answers.
-----	---

- Do not use ink, colored pens/pencils, markers, or highlighters in your test booklet. You can use your No. 2 pencil for any annotations or underlining.
- If you want to change an answer, completely erase the mark you made before making a new mark.

The science test has two sections. We will begin with Section 1. When you finish Section 1, you will see the stop sign. Do not go beyond the stop sign.

When you finish Section 1, please check your answers in Section 1. Be sure to check the following:

- Every question in this part of the test booklet has been answered;
- For answers with bubbles, the bubbles are filled in completely; and
- All other bubbles are empty.

You may not go ahead to any other part of this test booklet at any time.

Are there any questions?

Answer any questions.

SAY Open your test booklet to Page 2.

Make sure all students have turned to the correct page.

Page 2 contains the directions for the science test.

We will read the directions together.

Directions:

1. For questions with bubbled responses, fill in the circle next to your answer choice. If you change your answer, make sure you erase your old answer completely. Do not cross out or make any marks on the other choices.
2. For questions with response boxes, write your answer neatly, clearly, and in the space provided.
3. For questions with response grids,
 - a. Write your answer in the answer boxes at the top of the grid.
 - i. Write only one digit or symbol in each answer box.
 - b. You may fill in a bubble under each box in which you wrote your answer.

SAY

- i. Fill in one and **ONLY** one bubble for each answer box. Do **NOT** fill in a bubble under an unused answer box.
- ii. Fill in each bubble by making a solid mark that completely fills the circle.

Are there any questions?

Answer any questions.

SAY

Be sure to read the directions within each question carefully. Some questions will require you to give your answers in different ways.

You may use scratch paper, but you need to record your answer in the test booklet.

When you see the words **GO TO NEXT PAGE** at the bottom of the page, turn the page and continue working. When you come to the word **STOP**, you have finished Section 1.

You may go back and check your answers in this section only. After you have checked your answers to the questions, close your test booklet.

Then, sit quietly and work on some activity while others are completing the test.

Are there any questions?

Answer any questions.

SAY

This test is not timed.

Now turn the page, and you may begin Section 1 of the science test.

Make sure all students have turned to the correct page in their test booklets. While students are taking Section 1 of the science test, move around the room and make sure students are progressing through the test. Test administrators may answer student questions about test directions. Test administrators may not answer student questions about test content.

Although the test is not timed, the approximate time for this section is 55 minutes. If a student needs additional time, you must provide it. However, if during the additional time, the student stops for more than ten minutes without closing his or her test booklet, it is recommended you end the test.

When all students are finished, continue with the directions.

SAY

This is the end of Section 1. We are now going to take a break. You are not allowed to discuss the test or its contents or use any electronic devices during the break.

Have students put their scratch/graph paper inside their test booklets. Follow security procedures during the break.

Ten-Minute Break

Science, Section 2

SAY

You will use the same test booklet for both science test sections. Please check to see the test booklet in front of you has your name on the front cover.

Make sure each student has his or her own test booklet.

SAY

You are now going to begin Section 2 of the science test. Open your test booklet to Section 2.

SAY

When you see the words **GO TO NEXT PAGE** at the bottom of the page, turn the page and continue working. When you come to the word **STOP**, you have finished Section 2.

You may go back and check your answers in this section only. After you have checked your answers to the questions, close your test booklet.

Then, sit quietly and work on some activity while others are completing the test.

Are there any questions?

Answer any questions.

SAY

This test is not timed.

Now turn the page, and you may begin Section 2 of the science test.

Make sure all students have turned to the correct page in their test booklets. While students are taking Section 2 of the science test, move around the room and make sure students are progressing through the test. Test administrators may answer student questions about test directions. Test administrators may not answer student questions about test content.

Although the test is not timed, the approximate time for this section is 55 minutes. If a student needs additional time, you must provide it. However, if during the additional time, the student stops for more than 10 minutes without closing his or her test booklet, it is recommended you end the test.

When all students are finished, continue with the directions.

SAY This is the end of Section 2. Sit quietly while I collect all the materials.

Collect all test booklets and record their return on the Security Checklist. Collect all scratch/graph paper. Scratch/graph paper contains secure information and must be shredded by the school test coordinator.

Once the student has completed testing and turned in the test booklet, no student or adult can go back and review, change, or correct the test booklets for any reason. This includes checking for missing responses, duplicate responses, stray marks, etc.

All WVGSA test booklets are to be returned to the school test coordinator at the end of each testing day.

13.4 Using the Data Entry Interface for Accommodated Special Paper Version Tests

The Data Entry Interface (DEI) is a component of the online testing system that must be used to transfer all responses for students taking a paper test. This includes the writing response, multiple-choice responses, and extended or open-ended responses. Student responses must be transferred appropriately into a computer-based test using the Data Entry Interface. Student responses not transferred into DEI will not be scored. No student responses in the paper test booklets will be scored. The DEI can be accessed on the [West Virginia Portal](#).

Appendix A: Frequently Used Terms

The following table defines terms specific to the West Virginia General Summative Assessment.

Frequently Used Terms

Term	Definition
Accommodation	Changes in procedures or materials that increase equitable access during the West Virginia General Summative Assessment. Accommodations generate valid assessment results for students who need them; they allow these students to show what they know and can do. Accommodations are available for students with documented Individualized Education Programs (IEPs), English Learners (ELs), or 504 Plans. Approved accommodations do not compromise the construct, grade-level standards, or intended outcome of the assessments. See the <i>Guidelines for Participation in West Virginia State Assessments</i> on the West Virginia Portal . (Test Administrator Resources, General Information) for complete information.
Appeal	District test coordinators may submit and view appeal requests for resetting, reopening, invalidating, or restoring students' assessments and grace period extensions in accordance with WVDE procedures. These appeal requests must result from a test security incident or incorrect test setting that impacted testing. All requests must be approved by the WVDE.
Break	There is no limit on the number of breaks or the length of a break a student may be given. Breaks should be given according to each student's unique needs. However, for some portions of the test, breaks of more than 20 minutes will prevent the student from returning to items already attempted by the student.
District Test Coordinator (DC)	District-level staff member who is responsible for the overall administration of the summative assessment in a district. DCs should ensure the school test coordinators (SCs) and test administrators (TAs) in their districts are appropriately trained and aware of policies and procedures.
Invalidation	A specific appeal in the appeals module of TIDE. Invalidating a test in the appeals module results in the omission of test results and student responses from the testing and accountability systems. Students may NOT retest once they have a test invalidated. Invalidation is often the outcome for assessments impacted by a test security incident.
Item	A test question presented to a student to elicit a response.
Pause	Action taken by a student or TA to temporarily halt the test. Pauses of more than 20 minutes will prevent the student from returning to items already attempted, completed, and/or flagged for review. More information on test pausing is available in section 8.2 <i>General Rules of Online Testing</i> .

Term	Definition
Writing Test	The writing test was designed to provide students with an opportunity to demonstrate their ability to apply their knowledge and higher-order thinking skills to explore and analyze a complex, real-world scenario. It is a required portion of the test.
School Test Coordinator (SC)	School staff member responsible for monitoring the test schedule, process, and TAs. SCs are also responsible for ensuring TAs have been appropriately trained and testing is conducted in accordance with the test security and other policies and procedures established by the <i>WVBE Policy 2340</i> .
Secure Browser	A web browser downloaded and installed on a computer prior to a student beginning the test. The browser is specifically designed for use with the West Virginia General Summative Assessment to provide secure access to each content area test and prevent students from accessing specific hardware and software functions (e.g., other browsers, screenshot programs) not allowed during the assessments.
Segment	A part of a test within the test delivery system. When a student completes a segment of the test, he or she will receive a message indicating once the segment is submitted, it is no longer possible to return to that segment.
Session	A timeframe in which students actively test in a single sitting. The length of a test session is determined by building or district administrators who are knowledgeable about the periods in the building and the timing needs associated with the assessment. Test session durations can range between 40 and 120 minutes. The West Virginia General Summative Assessment is not timed, and an individual student may need more or less time overall. Further, individual students will have unique needs regarding the length of a test session. <i>Note: A test session does not need to end when a segment ends.</i>
Statewide Student Identifier (SSID)	The WVEIS number or the Assessment ID number. In some cases, this <i>may</i> be the same identifier used on other state assessments.
Stimulus/Stimuli	Material(s) used in the test context which form the basis for assessing the knowledge and skills of students. Many items/tasks for the assessments include a stimulus along with a set of questions to which the student responds. Stimulus materials are used in the assessments to provide context for assessing the knowledge and skills of students and are diverse. They can be traditional reading passages/texts but viewed on a computer screen; images with audio presentations to which students listen; simulated web pages for students to use for research; or scenarios to which students react.
Test Administrator (TA)	District or school personnel responsible for administering the West Virginia General Summative Assessment in a secure manner in compliance with the policies and procedures outlined in the <i>Online Test Administration Manual</i> .

Term	Definition
Test Information Distribution Engine (TIDE)	The registration system used for the West Virginia General Summative Assessment. This is the system through which users interact with and inform the test delivery system. This registration system controls adding and managing users and students participating in the West Virginia General Summative Assessment. This system uses a role-specific design to restrict access to certain tools and applications based on the user's designated role.
Test Security Incident Log	Document of record for a district to record all test security incidents. The Test Security Incident Log can be downloaded from the District Test Coordinators Teams page, General channel, under files, Assessment Forms folder.
Testing Breach	A security incident posing a threat to the validity of the test. Examples may include such situations as a release of secure materials or a security/system risk. A breach incident must be reported immediately to the state level. For specific details on how to proceed when an incident has occurred, please refer to section <i>5.0 Responding to Testing Irregularities and Breaches</i> of this manual.
Testing Irregularity	An unusual circumstance impacting the individual or group of students who are testing and potentially affecting student performance on the test, test security, or test validity. These circumstances can be corrected and contained at the local level but are submitted in the online system for resolution of the Appeal for testing impact. For specific details on how to proceed when an incident has occurred, please refer to <i>5.0 Responding to Testing Irregularities</i> of this manual.
Universal Tools	Available to all students based on student preference and selection. See the <i>Guidelines for Participation in West Virginia State Assessments</i> on the West Virginia Portal (Test Administrator Resources) for complete information.

Appendix B: Item Types

Item and Response Types

As students engage with the West Virginia General Summative Assessment, they will be asked test questions requiring them to respond in several ways, some of which may be new to students.

Several resources are available for teachers and students to use to get ready for the test, including a Practice Test. As pointed out in *Appendix D* of this manual, it is *highly recommended* ALL students access the Practice Test site *BEFORE* taking the test. Doing so will provide students an opportunity to view and practice each of the item types.

The Practice Tests are available through the [West Virginia Portal](#).

Summary of Item Types and How to Provide Responses

The following table lists the different item types and briefly describes each one.



Not all assessments will necessarily include all item types.

Item and Scoring Types

Content Area	Type of Item	Brief Description of How to Respond
ELA, Mathematics, and Science	Multiple Choice, single correct response	Select a single option
	Multiple Choice, multiple correct responses	Select one or more options
	Matching Interactions (with a variation True/False or Yes/No)	Match text or images in rows to values in columns
	Short answer text response	Keyboard entry
Mathematics and Science Only	Grid Item – Drag-and-Drop	Drag-and-drop single or multiple elements into a background image
	Grid Item – Hot Spot	Select certain area(s) of an image
	Table Interaction	Keyboard entry into table cells
	Grid Item – Graphing	Plot points and/or draw lines
	Equation/Numeric	Enter equation or numeric response using an on-screen panel containing mathematical characters
ELA Only	Two-part multiple choice, with evidence-based response (EBSR)	Two-part item – respond to a multiple-choice item and then respond to a multiple selection item

	Hot Text	Select sections of text or drag-and-drop sections of text
	Writing Extended Response	Keyboard entry

Technical Skills to Access Embedded Resources

To access some of the embedded resources (such as strikethrough, highlighter, and text-to-speech) available to help work through these item types, students may need to access the context menu by clicking on the context menu bars in the top right corner of the item or passage.

Appendix C: Secure Browser for Testing

Test administrators (TAs) should be aware of the following guidelines and employ the necessary precautions while administering online assessments:

- **Close External User Applications**
Prior to administering the online assessments, TAs should check all devices used and close all applications except those identified as necessary by the technology coordinator. After closing these applications, the TA should open the secure browser on each device.
- The secure browser and Student Interface automatically detect certain applications prohibited from running on a computer while the secure browser is open. The secure browser will not allow a student to log in if the computer detects a forbidden application is running. A message will also display listing the forbidden application(s) that needs to be closed.



If a forbidden application is launched in the background while the student is already in a test, the student will be logged out and a message displayed. The student will have to close the forbidden application, reopen the secure browser, and log in to continue working on the assessment. This would be considered a test security incident.

Secure Browser Error Messages

Possible error messages displayed by the secure browser are shown below.

Secure Browser Error Messages

Message	Description
Secure Browser Not Detected	The system automatically detects whether a computer is using the secure browser to access the online testing system. The system will not permit access to a test other than through the secure browser; under no condition may a student access an operational test using a non-secure browser.
Unable to Establish a Connection with the Test Delivery System	If a computer fails to establish a connection with the test delivery system, a message will be displayed. This is most likely to occur if there is a network-related problem. The causes may include an unplugged network cable or a firewall not allowing access to the site.

Force-quit Commands for Secure Browsers

In the rare event the secure browser or test becomes unresponsive and you cannot pause the test or close the secure browser, users can “force quit” the secure browser.

To force the browser to close, use the following keyboard commands. (Reminder: This will log the student out of the test he or she is taking. When the secure browser is opened again, the student will have to log back in to resume testing.)



You are strongly advised against using the force-quit commands, as the secure browser treats this action as an abnormal termination. The secure browser hides features such as the Windows taskbar; if the secure browser is not closed correctly, then the taskbar may not reappear correctly.

These commands should be used only if the [Close Secure Browser] button does not work.

Force-quit Commands

Windows: [Ctrl] + [Alt] + [Shift] + [F10]

Mac OS X: [Ctrl] + [Alt] + [Shift] + [F10]

Linux: [Ctrl] + [Alt] + [Shift] + [Esc]

Note for Windows and Mac Users:

If you are using a laptop or netbook, you may also need to press the [FN] key before pressing [F10].

Appendix D: Practice Tests

In preparation for the test and to expose students to the various item-response types in ELA, mathematics, and science (see *Appendix B* for item types), it is highly recommended all students access the Practice Tests, available through the [West Virginia Portal](#). Each resource offers students a unique opportunity to experience a test in a manner similar to what they will see on the summative assessments. These resources will not be scored; however, scoring guides are available on the [West Virginia Portal](#).

Overview of the Practice Tests

The Practice Tests allow educators and students to experience a full grade-level test and gain insight into the West Virginia General Summative Assessment. The Practice Tests mirror the summative assessments but are not scored. Each grade-level ELA and mathematics test includes a variety of item response types and difficulty levels—approximately thirty items each in ELA and mathematics—at each grade level (3–8). The Science Practice Tests includes multiple choice and equation/numeric item response types – approximately 6-10 per test—at grade levels 5 and 8.

It is *highly recommended* all students access the Practice Test site before taking a test. Teachers are encouraged to conduct a group walk-through of Practice Test with their students to promote familiarity with the testing format, basic test rules, and to allow for free and open communication on the testing process and/or content (see section 8.2 *General Rules of Online Testing*). The walk-throughs of the Practice Tests provide opportunities for TAs to describe the limitations to the support they will be able to provide and the verbal interactions they can have with students during each live test session.

Appendix E: Computer Test Pause Rule Scenarios

Pause Guidelines:

1. There is no pause rule for the ELA – Writing Test.
2. If an ELA - Reading, Mathematics, or Science Test is paused for less than 20 minutes, the student can return to previous test pages and change the response to any item he or she has already answered within the current segment.
3. If an ELA - Reading, Mathematics, or the Science Test is paused for more than 20 minutes, the test will return the student to the last page with unanswered items when the student resumes testing. If a page has both answered and unanswered items, the student may change any answers on that page. The student may not return to previous pages and cannot change answers to items on previous pages.
 - a. Example: A single test page has items 4–10. A student answers items 4–7 and pauses the test for more than 20 minutes. When the student resumes testing, he or she can change answers to items 4–7 and enter answers for items 8-10 but cannot return to items 1–3 on an earlier page.
 - b. Example: A page contains items 9–11, and a student answers all of those items before pausing the test for more than 20 minutes. When the student resumes testing, he or she will begin on item 12 and cannot return to items 1–11.
 - c. Example: A student answers items 1–15, marks item 12 for review, returns to the page with item 12 and removes the answer to item 12. The test is paused for more than 20 minutes. When the student resumes testing, he or she will begin on item 12 but when the student hits next, he or she will be taken to item 16 and will not be able to return to items 1-15.
4. Grace period extension – In the event of a technical issue (e.g., power outage or network failure), students will be logged out and the test will automatically be paused. The students will need to log in again upon resuming the test. When a technical issue results in a pause greater than 20 minutes, SCs must document the technical issue on the Test Security Incident Log. The SC will then contact the district test coordinator concerning this event. The DC may contact the WVDE for technical issues meriting a grace period extension.

Appendix F: Test Security Chart

The Test Security Chart shows the test security incident levels and examples of types of issues.

	Types of Issues
Irregularity	Student(s) cheating or providing answers to each other, including passing notes, giving help to other students during testing, or using hand-held electronic devices to exchange information.
	Student(s) accessing the Internet or any unauthorized software or applications during a testing event.
	Student(s) accessing or using unauthorized electronic equipment (e.g., cell phones, iPods, or electronic translators) during testing.
	Disruptions to a test session such as a fire drill, school-wide power outage, earthquake, or other acts.
	Administrator or coordinator failing to ensure administration and supervision of the assessments by qualified, trained personnel.
	Administrator giving incorrect instructions that are not corrected prior to testing.
	Administrator or coordinator giving out his or her username/password (via email or otherwise), including to other authorized users.
	Administrator allowing students to continue testing beyond the close of the testing window.
	Administrator or teacher coaching or providing any other type of assistance to students that may affect their responses. This includes both verbal cues (e.g., interpreting, explaining, or paraphrasing the test items or prompts) and nonverbal cues (e.g., voice inflection, pointing, or nodding head) to the correct answer. This also includes leading students through instructional strategies such as think-aloud, asking students to point to the correct answer or otherwise identify the source of their answer, or requiring students to show their work.
	Administrator providing students with nonallowable materials or devices during test administration or allowing inappropriate accommodations during test administration.
	Administrator allowing anyone other than a student to log in to the test unless prescribed as an allowable accommodation in the student's Individualized Education Program (IEP). This includes test administrators (TAs) or other staff using student information to log in or allowing a student to log in using another student's information.
Administrator providing a student access to another student's work/responses.	
BREACH	Administrator or coordinator modifying student responses or records at any time.
	The live Student Interface or TA Interface being used for practice instead of the Practice Tests.
	Adult or student posting items or test materials on social media (Twitter, Facebook, etc.).
	Administrator allowing students to take home printed test items, reading passages, writing prompts, or scratch paper that was used during the test or failing to otherwise securely store test materials.



	Adult or student copying, discussing, or otherwise retaining test items, reading passages, writing prompts, or answers for any reason. This includes the use of photocopiers or digital, electronic, or manual devices to record or communicate a test item. This also includes using secure test items, modified secure test items, reading passages, writing prompts, or answer keys for instructional purposes.
	Secure test materials being shared with the media (such as the writing prompts, test items, or reading passages), or allowing media to observe a secure test administration.
	Adult or student improperly removing secure testing materials such as test items, stimuli, reading passages, writing prompts, or scratch paper from the testing environment.

Appendix G: Multiplication Table and 100s Table



The Multiplication Table and 100s Table may only be used in Grades 4 and above by students with the appropriate accommodation.

A single-digit (1–9) multiplication table is a non-embedded accommodation for Grades 4 and above mathematics items. The multiplication table is to be used *only* for students with a documented and persistent calculation disability (i.e., dyscalculia). This table can be printed for students requiring this accommodation from the [West Virginia Portal](https://wv.portal.cambiumast.com/) at <https://wv.portal.cambiumast.com/>. Use of other multiplication tables is prohibited.

Multiplication Table

×	1	2	3	4	5	6	7	8	9
1	1	2	3	4	5	6	7	8	9
2	2	4	6	8	10	12	14	16	18
3	3	6	9	12	15	18	21	24	27
4	4	8	12	16	20	24	28	32	36
5	5	10	15	20	25	30	35	40	45
6	6	12	18	24	30	36	42	48	54
7	7	14	21	28	35	42	49	56	63
8	8	16	24	32	40	48	56	64	72
9	9	18	27	36	45	54	63	72	81

A table listing numbers from 1-100 is a non-embedded accommodation for Grades 4 and above mathematics items. The 100s number table is to be used only for students with visual processing or spatial perception needs as documented in their IEP or 504 plan. This table can be printed for students requiring this accommodation from the [West Virginia Portal](https://wv.portal.cambiumast.com/) at <https://wv.portal.cambiumast.com/>. Use of other 100s number tables is prohibited.

100s Number Table

1	2	3	4	5	6	7	8	9	10
11	12	13	14	15	16	17	18	19	20
21	22	23	24	25	26	27	28	29	30
31	32	33	34	35	36	37	38	39	40
41	42	43	44	45	46	47	48	49	50
51	52	53	54	55	56	57	58	59	60
61	62	63	64	65	66	67	68	69	70
71	72	73	74	75	76	77	78	79	80
81	82	83	84	85	86	87	88	89	90
91	92	93	94	95	96	97	98	99	100